

SHOC2 Antibody



PACO52882

Product Information

Size:

50ug

Reactivity:

Human

Source:

Rabbit

Isotype:

IgG

Applications:

ELISA, WB, IHC, IF

Recommended dilutions:

ELISA:1:2000-1:10000, WB:1:500-1:5000,
IHC:1:20-1:200, IF:1:50-1:200

Protein Background:

Regulatory subunit of protein phosphatase 1 (PP1c) that acts as a M-Ras/MRAS effector and participates in MAPK pathway activation. Upon M-Ras/MRAS activation, targets PP1c to specifically dephosphorylate the 'Ser-259' inhibitory site of RAF1 kinase and stimulate RAF1 activity at specialized signaling complexes.

Gene ID:

SHOC2

Uniprot

Q9UQ13

Synonyms:

Leucine-rich repeat protein SHOC-2 (Protein soc-2 homolog) (Protein sur-8 homolog), SHOC2, KIAA0862

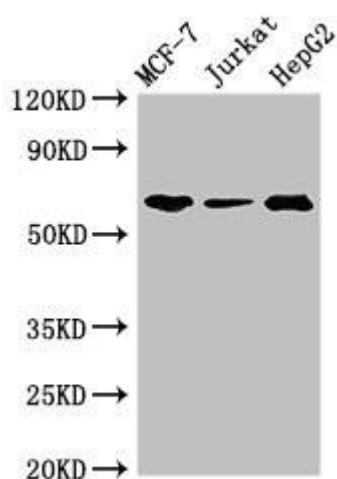
Immunogen:

Recombinant Human Leucine-rich repeat protein SHOC-2 protein (3-89AA).

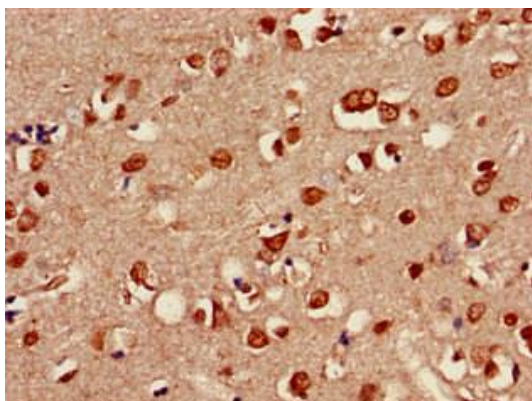
Storage:

Preservative: 0.03% Proclin 300. Constituents: 50% Glycerol, 0.01M PBS, pH 7.4

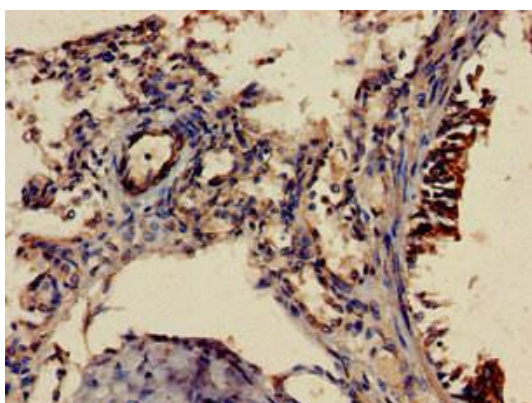
Product Images



Western Blot. Positive WB detected in: MCF-7 whole cell lysate, Jurkat whole cell lysate, HepG2 whole cell lysate. All lanes: SHOC2 antibody at 3 μ g/ml. Secondary. Goat polyclonal to rabbit IgG at 1/50000 dilution. Predicted band size: 65, 60 kDa. Observed band size: 65 kDa.



Immunohistochemistry of paraffin-embedded human brain tissue using PACO52882 at dilution of 1:100.



Immunohistochemistry of paraffin-embedded human lung tissue using PACO52882 at dilution of 1:100.