

SLC6A13 Antibody



PACO52866

Product Information

Size:

50ug

Reactivity:

Human, Mouse

Source:

Rabbit

Isotype:

IgG

Applications:

ELISA, WB, IHC, IF

Recommended dilutions:

ELISA:1:2000-1:10000, WB:1:500-1:5000,
IHC:1:20-1:200, IF:1:50-1:200

Protein Background:

Sodium-dependent GABA and taurine transporter. In presynaptic terminals, regulates GABA signaling termination through GABA uptake. May also be involved in beta-alanine transport.

Gene ID:

SLC6A13

Uniprot

Q9NSD5

Synonyms:

Sodium- and chloride-dependent GABA transporter 2 (GAT-2) (Solute carrier family 6 member 13), SLC6A13, GAT2

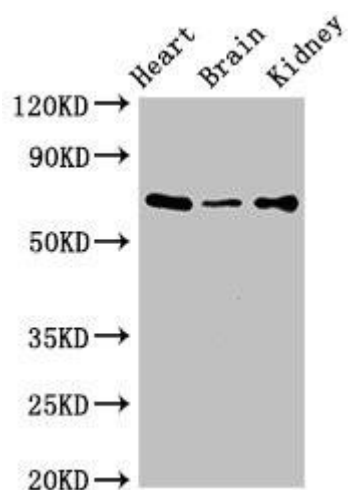
Immunogen:

Recombinant Human Sodium- and chloride-dependent GABA transporter 2 protein (1-40AA).

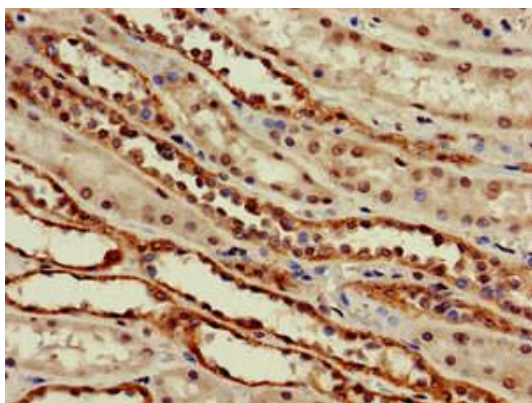
Storage:

Preservative: 0.03% Proclin 300. Constituents: 50% Glycerol, 0.01M PBS, pH 7.4

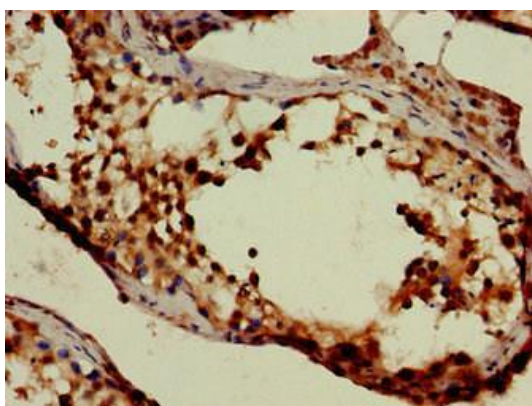
Product Images



Western Blot. Positive WB detected in: Mouse heart tissue, Mouse brain tissue, Mouse kidney tissue. All lanes: SLC6A13 antibody at 3 μ g/ml. Secondary. Goat polyclonal to rabbit IgG at 1/50000 dilution. Predicted band size: 69, 58, 11 kDa. Observed band size: 69 kDa.



Immunohistochemistry of paraffin-embedded human kidney tissue using PACO52866 at dilution of 1:100.



Immunohistochemistry of paraffin-embedded human testis tissue using PACO52866 at dilution of 1:100.