

PACO52850

Product Information

Size:

50ug

Reactivity:

Human, Rat

Source:

Rabbit

Isotype:

IgG

Applications:

ELISA, WB, IHC

Recommended dilutions:

ELISA:1:2000-1:10000, WB:1:500-1:5000,
IHC:1:20-1:200

Protein Background:

Secreted scaffold protein that plays an essential role in dorsoventral patterning during early development. Stabilizes axial formation by restricting chordin (CHRD) activity on the dorsal side. Acts by facilitating the association between the tolloid proteases and their substrate chordin (CHRD), leading to enhance chordin (CHRD) degradation. May have matrix-related function involved in placental and embryonic development, or play a similar role in other physiological processes.

Gene ID:

OLFML3

Uniprot

Q9NRN5

Synonyms:

Olfactomedin-like protein 3 (HNOEL-iso) (hOLF44), OLFML3

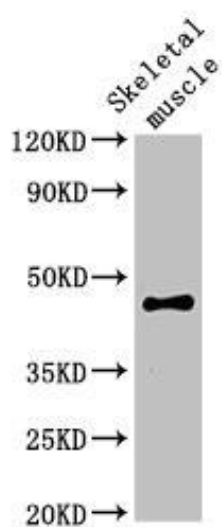
Immunogen:

Recombinant Human Olfactomedin-like protein 3 protein (201-406AA).

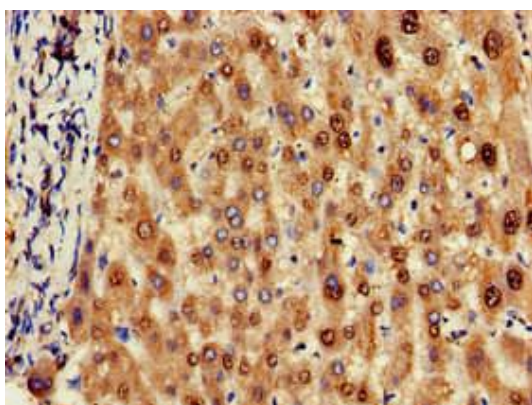
Storage:

Preservative: 0.03% Proclin 300. Constituents: 50% Glycerol, 0.01M PBS, pH 7.4

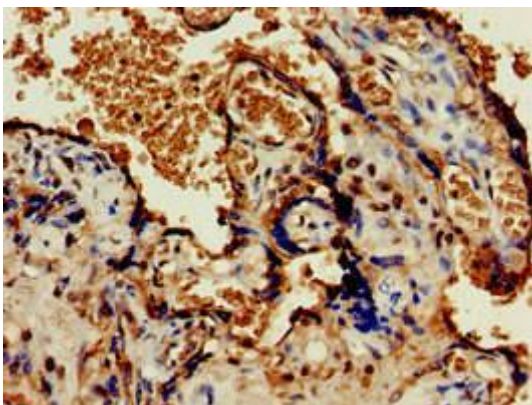
Product Images



Western Blot. Positive WB detected in: Rat skeletal muscle tissue. All lanes: OLFML3 antibody at 2 μ g/ml. Secondary. Goat polyclonal to rabbit IgG at 1/50000 dilution. Predicted band size: 47, 44, 33 kDa. Observed band size: 47 kDa.



Immunohistochemistry of paraffin-embedded human liver tissue using PACO52850 at dilution of 1:100.



Immunohistochemistry of paraffin-embedded human placenta tissue using PACO52850 at dilution of 1:100.