

B1 Antibody



PACO52838

Product Information

Size:

50ug

Reactivity:

Human herpesvirus 6B

Source:

Rabbit

Isotype:

IgG

Applications:

ELISA, WB

Recommended dilutions:

ELISA:1:2000-1:10000, WB:1:500-1:5000

Protein Background:

Gene ID:

B1

Uniprot

Q9PX69

Synonyms:

Protein B1, B1

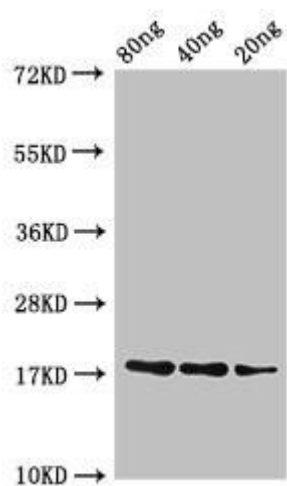
Immunogen:

Recombinant Human herpesvirus 6B Protein B1 protein (1-159AA).

Storage:

Preservative: 0.03% Proclin 300. Constituents: 50% Glycerol, 0.01M PBS, pH 7.4

Product Images



Western Blot. Positive WB detected in Recombinant protein. All lanes: B1 antibody at 3 μ g/ml. Secondary. Goat polyclonal to rabbit IgG at 1/50000 dilution. predicted band size: 18 kDa. observed band size: 18 kDa.