

KIF17 Antibody



PACO52746

Product Information

Size:

50ug

Reactivity:

Human

Source:

Rabbit

Isotype:

IgG

Applications:

ELISA, IHC, IF

Recommended dilutions:

ELISA:1:2000-1:10000, IHC:1:20-1:200,
IF:1:50-1:200

Protein Background:

Transports vesicles containing N-methyl-D-aspartate (NMDA) receptor 2B along microtubules.

Gene ID:

KIF17

Uniprot

Q9P2E2

Synonyms:

Kinesin-like protein KIF17 (KIF3-related motor protein), KIF17, KIAA1405 KIF3X

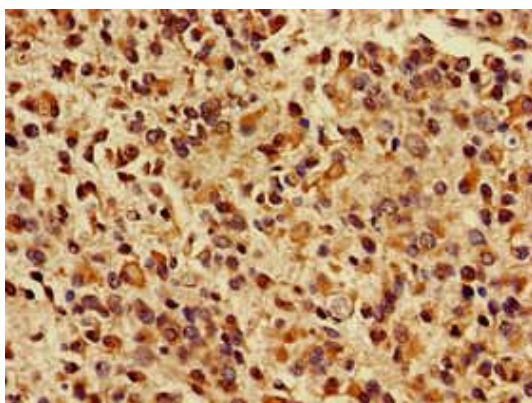
Immunogen:

Recombinant Human Kinesin-like protein KIF17 protein (500-777AA).

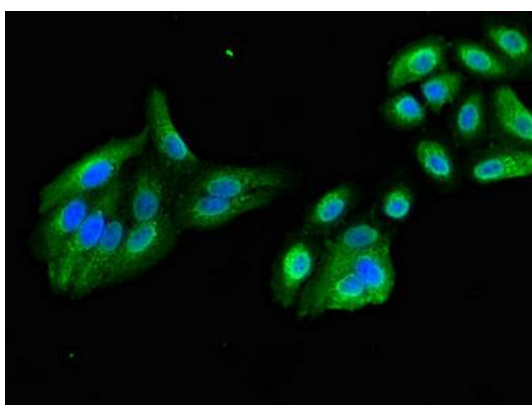
Storage:

Preservative: 0.03% Proclin 300. Constituents: 50% Glycerol, 0.01M PBS, pH 7.4

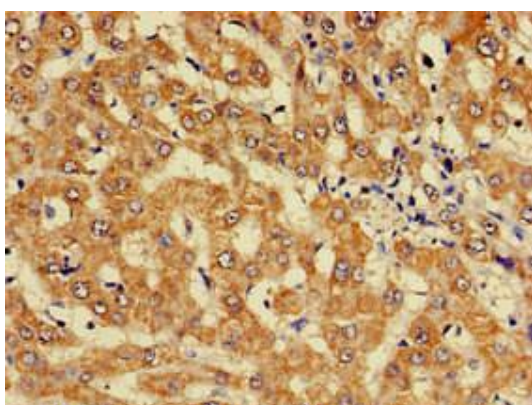
Product Images



Immunohistochemistry of paraffin-embedded human glioma using PACO52746 at dilution of 1:100.



Immunofluorescent analysis of HepG2 cells using PACO52746 at dilution of 1:100 and Alexa Fluor 488-conjugated AffiniPure Goat Anti-Rabbit IgG(H+L).



Immunohistochemistry of paraffin-embedded human liver cancer using PACO52746 at dilution of 1:100.