

SERPINI1 Antibody



PACO52730

Product Information

Size:

50ug

Reactivity:

Human

Source:

Rabbit

Isotype:

IgG

Applications:

ELISA, IHC

Recommended dilutions:

ELISA:1:2000-1:10000, IHC:1:20-1:200

Protein Background:

Serine protease inhibitor that inhibits plasminogen activators and plasmin but not thrombin. May be involved in the formation or reorganization of synaptic connections as well as for synaptic plasticity in the adult nervous system. May protect neurons from cell damage by tissue-type plasminogen activator.

Gene ID:

SERPINI1

Uniprot

Q99574

Synonyms:

Neuroserpin (Peptidase inhibitor 12) (PI-12) (Serpini1), SERPINI1, PI12

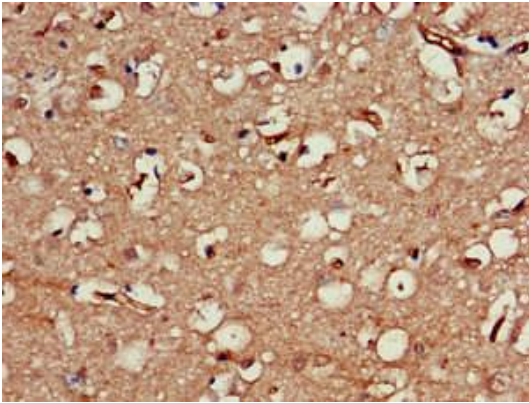
Immunogen:

Recombinant Human Neuroserpin protein (191-240AA).

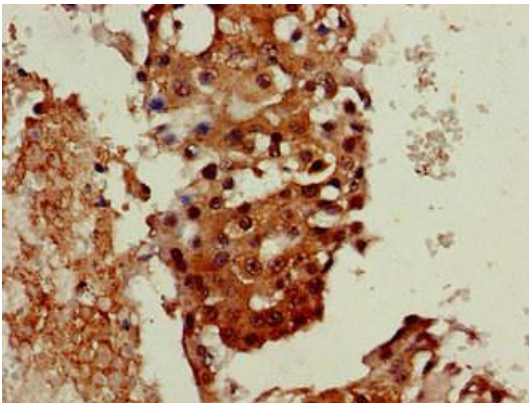
Storage:

Preservative: 0.03% Proclin 300. Constituents: 50% Glycerol, 0.01M PBS, pH 7.4

Product Images



Immunohistochemistry of paraffin-embedded human brain tissue using PACO52730 at dilution of 1:100.



Immunohistochemistry of paraffin-embedded human breast cancer using PACO52730 at dilution of 1:100.