

VMP1 Antibody



PACO52710

Product Information

Size:

50ug

Reactivity:

Human, Mouse

Source:

Rabbit

Isotype:

IgG

Applications:

ELISA, WB, IHC

Recommended dilutions:

ELISA:1:2000-1:10000, WB:1:200-1:3000,
IHC:1:20-1:200

Protein Background:

Stress-induced protein that, when overexpressed, promotes formation of intracellular vacuoles followed by cell death. May be involved in the cytoplasmic vacuolization of acinar cells during the early stage of acute pancreatitis. Plays a role in the initial stages of the autophagic process through its interaction with BECN1. Involved in cell-cell adhesion. Plays an essential role in formation of cell junctions.

Gene ID:

VMP1

Uniprot

Q96GC9

Synonyms:

Vacuole membrane protein 1 (Transmembrane protein 49), VMP1, TDC1 TMEM49

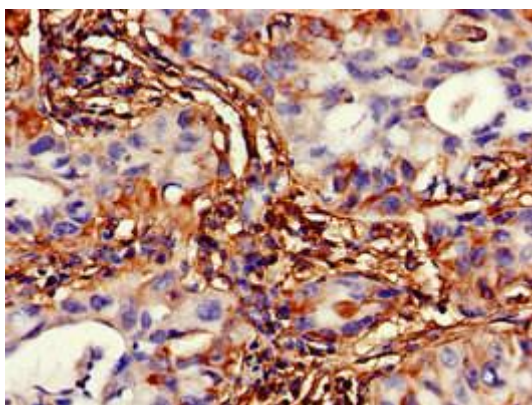
Immunogen:

Recombinant Human Vacuole membrane protein 1 protein (136-235AA).

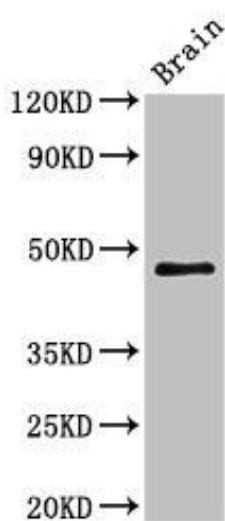
Storage:

Preservative: 0.03% Proclin 300. Constituents: 50% Glycerol, 0.01M PBS, pH 7.4

Product Images



Immunohistochemistry of paraffin-embedded human lung cancer using PACO52710 at dilution of 1:100.



Western Blot. Positive WB detected in: Mouse brain tissue. All lanes: VMP1 antibody at 3 μ g/ml. Secondary. Goat polyclonal to rabbit IgG at 1/50000 dilution. Predicted band size: 47, 25 kDa. Observed band size: 47 kDa.