

PACO52694

Product Information

Size:

50ug

Reactivity:

Human, Mouse, Rat

Source:

Rabbit

Isotype:

IgG

Applications:

ELISA, WB, IHC

Recommended dilutions:

ELISA:1:2000-1:10000, WB:1:500-1:5000,
IHC:1:20-1:200

Protein Background:

Downstream effector molecule involved in the transmission of signals from tyrosine kinase receptors and small GTPases to the actin cytoskeleton. Promotes formation of actin filaments. Part of the WAVE complex that regulates lamellipodia formation. The WAVE complex regulates actin filament reorganization via its interaction with the Arp2/3 complex.

Gene ID:

WASF1

Uniprot

Q92558

Synonyms:

Wiskott-Aldrich syndrome protein family member 1 (WASP family protein member 1) (Protein WAVE-1) (Verprolin homology domain-containing protein 1), WASF1, KIAA0269 SCAR1 WAVE1

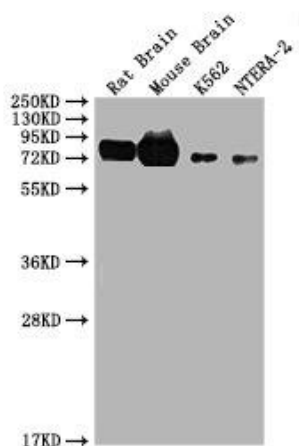
Immunogen:

Recombinant Human Wiskott-Aldrich syndrome protein family member 1 protein (381-553AA).

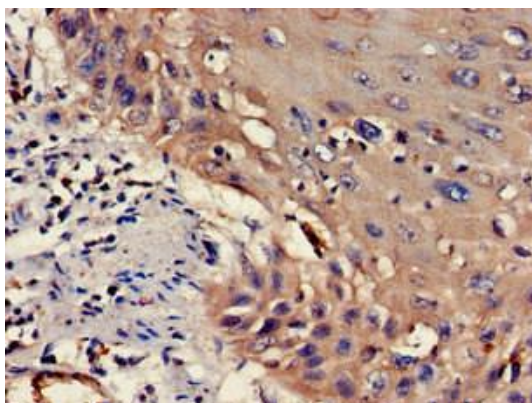
Storage:

Preservative: 0.03% Proclin 300. Constituents: 50% Glycerol, 0.01M PBS, pH 7.4

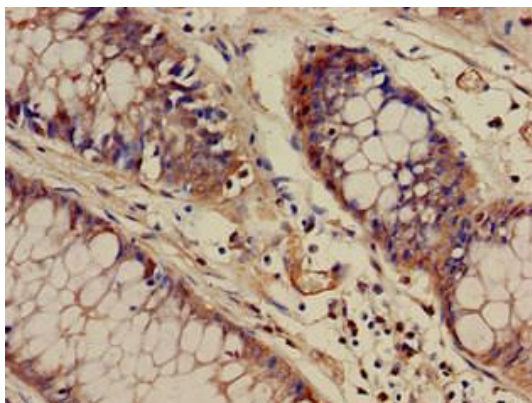
Product Images



Western Blot. Positive WB detected in: Rat brain tissue, Mouse brain tissue, K562, NTERA-2. All lanes: WASF1 antibody at 1.5 μ g/ml. Secondary: Goat polyclonal to rabbit IgG at 1/50000 dilution. Predicted band size: 80 kDa. Observed band size: 62 kDa.



Immunohistochemistry of paraffin-embedded human cervical cancer using PACO52694 at dilution of 1:100.



Immunohistochemistry of paraffin-embedded human colon cancer using PACO52694 at dilution of 1:100.