

CEP19 Antibody



PACO52682

Product Information

Size:

50ug

Reactivity:

Human

Source:

Rabbit

Isotype:

IgG

Applications:

ELISA, IHC

Recommended dilutions:

ELISA:1:2000-1:10000, IHC:1:20-1:200

Protein Background:

centriole, centrosome, ciliary basal body, spindle pole.

Gene ID:

CEP19

Uniprot

Q96LK0

Synonyms:

Centrosomal protein of 19 kDa (Cep19), CEP19, C3orf34

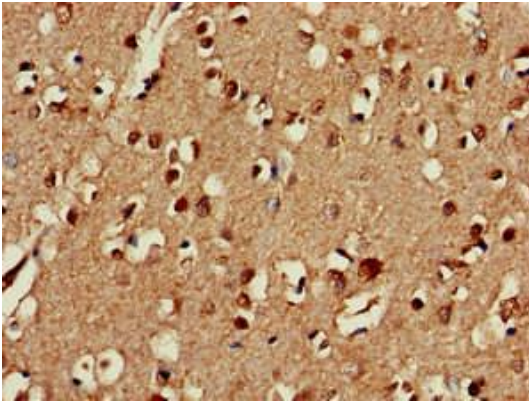
Immunogen:

Recombinant Human Centrosomal protein of 19 kDa protein (1-163AA).

Storage:

Preservative: 0.03% Proclin 300. Constituents: 50% Glycerol, 0.01M PBS, pH 7.4

Product Images



Immunohistochemistry of paraffin-embedded human brain tissue using PACO52682 at dilution of 1:100.