

Product Information

Size:

50ug

Reactivity:

Human

Source:

Rabbit

Isotype:

IgG

Applications:

ELISA, IHC, IF

Recommended dilutions:

ELISA:1:2000-1:10000, IHC:1:20-1:200,
IF:1:50-1:200

Protein Background:

Catalytic component of a structure-specific DNA repair endonuclease responsible for the 5-prime incision during DNA repair. Involved in homologous recombination that assists in removing interstrand cross-link.

Gene ID:

ERCC4

Uniprot

Q92889

Synonyms:

DNA repair endonuclease XPF (EC 3.1) (DNA excision repair protein ERCC-4) (DNA repair protein complementing XP-F cells) (Xeroderma pigmentosum group F-complementing protein), ERCC4, ERCC11 XPF

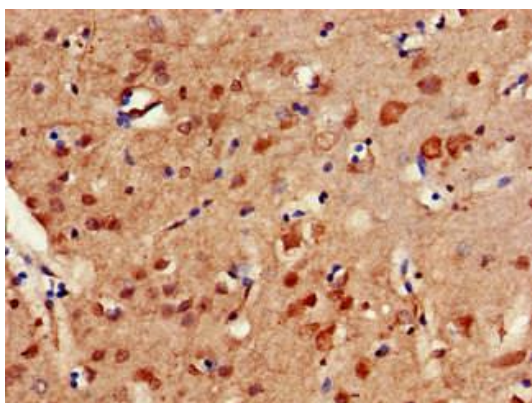
Immunogen:

Recombinant Human DNA repair endonuclease XPF protein (656-753AA).

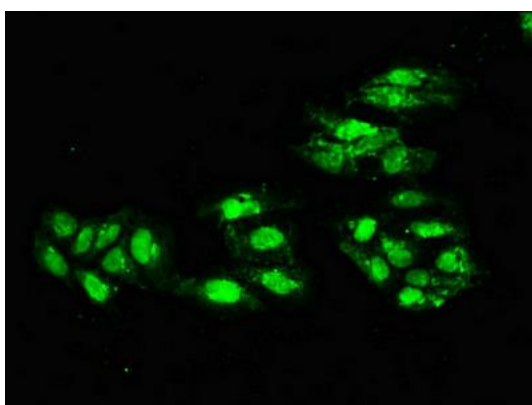
Storage:

Preservative: 0.03% Proclin 300. Constituents: 50% Glycerol, 0.01M PBS, pH 7.4

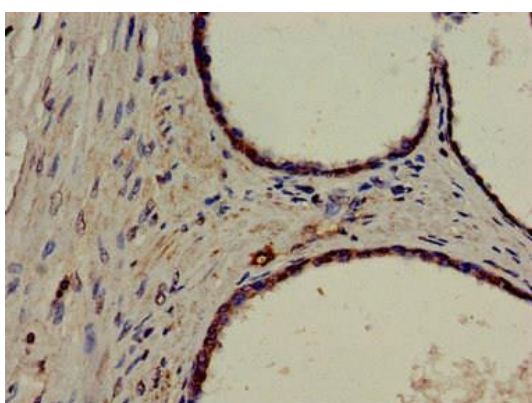
Product Images



Immunohistochemistry of paraffin-embedded human brain tissue using PACO52678 at dilution of 1:100.



Immunofluorescent analysis of HeLa cells using PACO52678 at dilution of 1:100 and Alexa Fluor 488-conjugated AffiniPure Goat Anti-Rabbit IgG(H+L).



Immunohistochemistry of paraffin-embedded human prostate cancer using PACO52678 at dilution of 1:100.