

STOML3 Antibody



PACO52650

Product Information

Size:

50ug

Reactivity:

Human, Mouse, Rat

Source:

Rabbit

Isotype:

IgG

Applications:

ELISA, WB, IHC, IF

Recommended dilutions:

ELISA:1:2000-1:10000, WB:1:500-1:5000,
IHC:1:20-1:200, IF:1:50-1:200

Protein Background:

Required for the function of many mechanoreceptors. Modulate mechanotransduction channels and acid, sensing ion channels (ASIC) proteins. Potentiates PIEZO1 and PIEZO2 function by increasing their sensitivity to mechanical stimulations.

Gene ID:

STOML3

Uniprot

Q8TAV4

Synonyms:

Stomatin-like protein 3 (SLP-3), STOML3

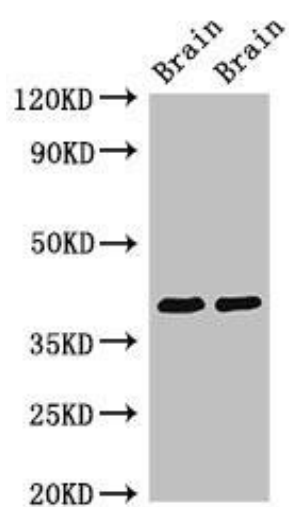
Immunogen:

Recombinant Human Stomatin-like protein 3 protein (205-291AA).

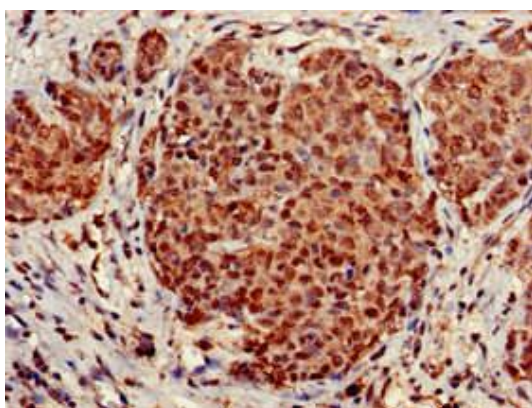
Storage:

Preservative: 0.03% Proclin 300. Constituents: 50% Glycerol, 0.01M PBS, pH 7.4

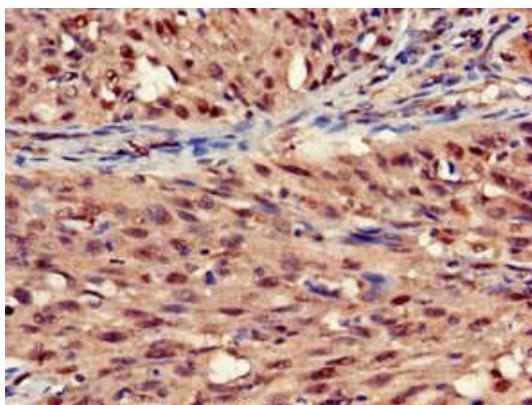
Product Images



Western Blot. Positive WB detected in: Rat brain tissue, Mouse brain tissue. All lanes: STOML3 antibody at 3.4 μ g/ml. Secondary: Goat polyclonal to rabbit IgG at 1/50000 dilution. Predicted band size: 33, 32 kDa. Observed band size: 40 kDa.



Immunohistochemistry of paraffin-embedded human ovarian cancer using PACO52650 at dilution of 1:100.



Immunohistochemistry of paraffin-embedded human lung cancer using PACO52650 at dilution of 1:100.