

## Product Information

**Size:**

50ug

**Reactivity:**

Human

**Source:**

Rabbit

**Isotype:**

IgG

**Applications:**

ELISA, IHC, IF

**Recommended dilutions:**

ELISA:1:2000-1:10000, IHC:1:20-1:200,  
IF:1:50-1:200

**Protein Background:**

In the inner ear, may be a component of the hair cell's mechanotransduction machinery that functionally couples PCDH15 to the transduction channel. Regulates transducer channel conductance and is required for fast channel adaptation.

**Gene ID:**

LHFPL5

**Uniprot**

Q8TAF8

**Synonyms:**

LHFPL tetraspan subfamily member 5 protein (Lipoma HMGIC fusion partner-like 5 protein) (Tetraspan membrane protein of hair cell stereocilia), LHFPL5, TMHS

**Immunogen:**

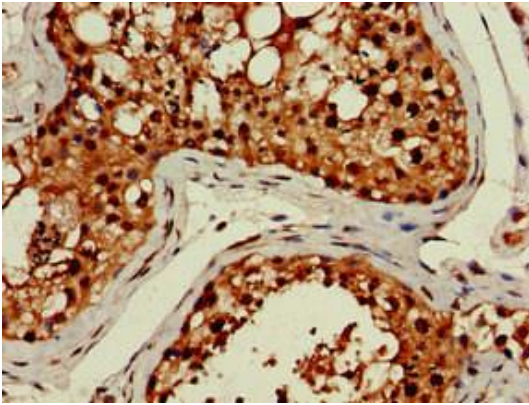
Recombinant Human LHFPL tetraspan subfamily member 5 protein (46-99AA).

**Storage:**

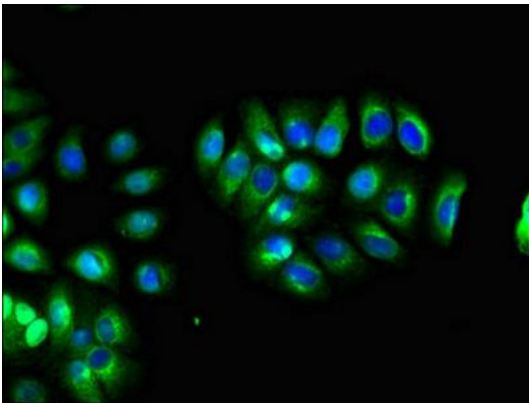
Preservative: 0.03% Proclin 300. Constituents: 50% Glycerol, 0.01M PBS, pH 7.4

## Product Images

---



Immunohistochemistry of paraffin-embedded human testis tissue using PACO52642 at dilution of 1:100.



Immunofluorescent analysis of A549 cells using PACO52642 at dilution of 1:100 and Alexa Fluor 488-conjugated AffiniPure Goat Anti-Rabbit IgG(H+L).



Immunohistochemistry of paraffin-embedded human skeletal muscle tissue using PACO52642 at dilution of 1:100.