

PACO52634

---

## Product Information

**Size:**

50ug

**Reactivity:**

Human

**Source:**

Rabbit

**Isotype:**

IgG

**Applications:**

ELISA, WB, IHC

**Recommended dilutions:**

ELISA:1:2000-1:10000, WB:1:500-1:5000,  
IHC:1:20-1:200

**Protein Background:**

Mediates GPI anchoring in the endoplasmic reticulum, by replacing a protein's C-terminal GPI attachment signal peptide with a pre-assembled GPI. During this transamidation reaction, the GPI transamidase forms a carbonyl intermediate with the substrate protein.

**Gene ID:**

PIGK

**Uniprot**

Q92643

**Synonyms:**

GPI-anchor transamidase (GPI transamidase) (EC 3) (GPI8 homolog) (hGPI8)  
(Phosphatidylinositol-glycan biosynthesis class K protein) (PIG-K), PIGK, GPI8

**Immunogen:**

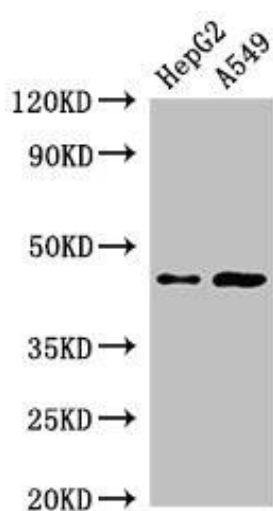
Recombinant Human GPI-anchor transamidase protein (91-293AA).

**Storage:**

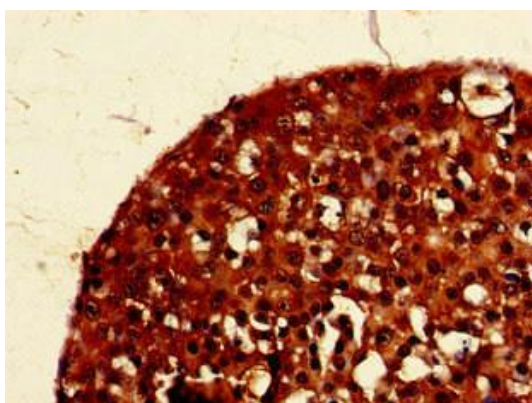
Preservative: 0.03% Proclin 300. Constituents: 50% Glycerol, 0.01M PBS, pH 7.4

## Product Images

---



Western Blot. Positive WB detected in: HepG2 whole cell lysate, A549 whole cell lysate. All lanes: PIGK antibody at 2.5 $\mu$ g/ml. Secondary. Goat polyclonal to rabbit IgG at 1/50000 dilution. Predicted band size: 46, 37 kDa. Observed band size: 46 kDa.



Immunohistochemistry of paraffin-embedded human breast cancer using PACO52634 at dilution of 1:100.