

TAS1R2 Antibody



PACO52622

Product Information

Size:

50ug

Reactivity:

Human

Source:

Rabbit

Isotype:

IgG

Applications:

ELISA, IF

Recommended dilutions:

ELISA:1:2000-1:10000, IF:1:50-1:200

Protein Background:

Putative taste receptor. TAS1R2/TAS1R3 recognizes diverse natural and synthetic sweeteners.

Gene ID:

TAS1R2

Uniprot

Q8TE23

Synonyms:

Taste receptor type 1 member 2 (G-protein coupled receptor 71) (Sweet taste receptor T1R2), TAS1R2, GPR71 T1R2 TR2

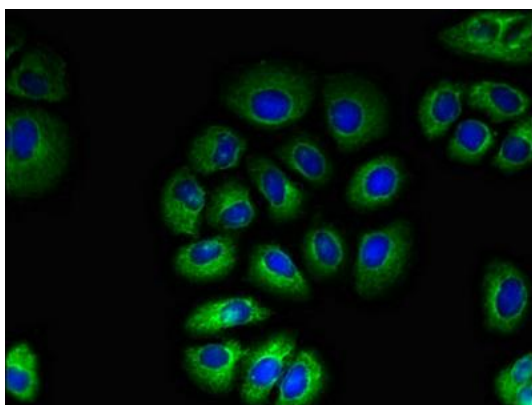
Immunogen:

Recombinant Human Taste receptor type 1 member 2 protein (183-362AA).

Storage:

Preservative: 0.03% Proclin 300. Constituents: 50% Glycerol, 0.01M PBS, pH 7.4

Product Images



Immunofluorescent analysis of A549 cells using PACO52622 at dilution of 1:100 and Alexa Fluor 488-conjugated AffiniPure Goat Anti-Rabbit IgG(H+L).