

# GUCD1 Antibody



PACO52606

---

## Product Information

**Size:**

50ug

**Reactivity:**

Human, Mouse

**Source:**

Rabbit

**Isotype:**

IgG

**Applications:**

ELISA, WB, IHC, IF

**Recommended dilutions:**

ELISA:1:2000-1:10000, WB:1:500-1:5000,  
IHC:1:20-1:200, IF:1:50-1:200

**Protein Background:****Gene ID:**

GUCD1

**Uniprot**

Q96NT3

**Synonyms:**

Protein GUCD1 (Guanylyl cyclase domain-containing protein 1) (Protein LLN4), GUCD1, C22orf13 LLN4

**Immunogen:**

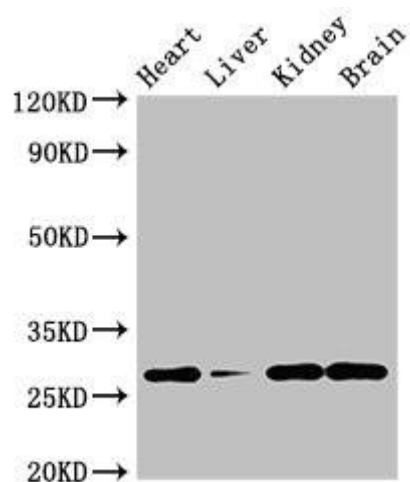
Recombinant Human Protein GUCD1 protein (1-136AA).

**Storage:**

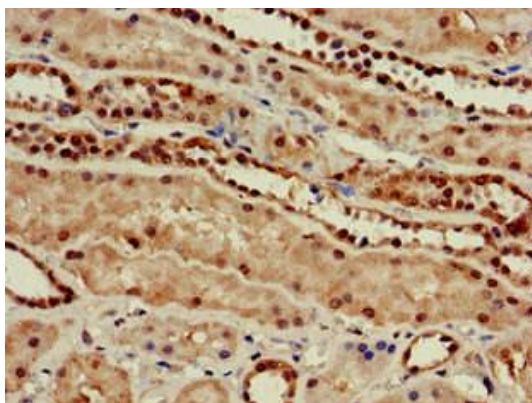
Preservative: 0.03% Proclin 300. Constituents: 50% Glycerol, 0.01M PBS, pH 7.4

## Product Images

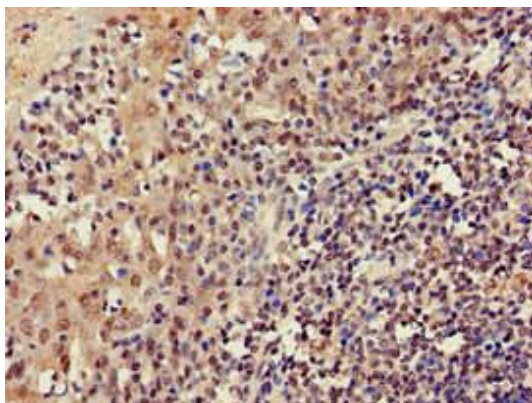
---



Western Blot. Positive WB detected in: Mouse heart tissue, Mouse liver tissue, Mouse kidney tissue, Mouse brain tissue. All lanes: GUCD1 antibody at 4 $\mu$ g/ml. Secondary. Goat polyclonal to rabbit IgG at 1/50000 dilution. Predicted band size: 28, 34 kDa. Observed band size: 28 kDa.



Immunohistochemistry of paraffin-embedded human kidney tissue using PACO52606 at dilution of 1:100.



Immunohistochemistry of paraffin-embedded human tonsil tissue using PACO52606 at dilution of 1:100.