

L3MBTL2 Antibody



PACO52602

Product Information

Size:

50ug

Reactivity:

Human, Rat

Source:

Rabbit

Isotype:

IgG

Applications:

ELISA, WB, IF

Recommended dilutions:

ELISA:1:2000-1:10000, WB:1:200-1:2000,
IF:1:50-1:200

Protein Background:

Putative Polycomb group (PcG) protein. PcG proteins maintain the transcriptionally repressive state of genes, probably via a modification of chromatin, rendering it heritably changed in its expressibility. Its association with a chromatin-remodeling complex suggests that it may contribute to prevent expression of genes that trigger the cell into mitosis. Binds to monomethylated and dimethylated 'Lys-20' on histone H4. Binds histone H3 peptides that are monomethylated or dimethylated on 'Lys-4', 'Lys-9' or 'Lys-27'.

Gene ID:

L3MBTL2

Uniprot

Q969R5

Synonyms:

Lethal(3)malignant brain tumor-like protein 2 (H-l(3)mbt-like protein 2) (L(3)mbt-like protein 2), L3MBTL2

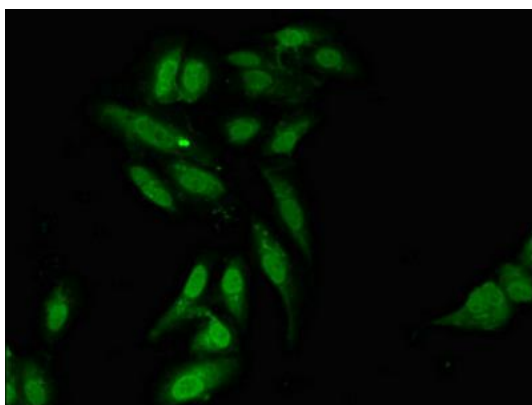
Immunogen:

Recombinant Human Lethal(3)malignant brain tumor-like protein 2 protein (1-230AA).

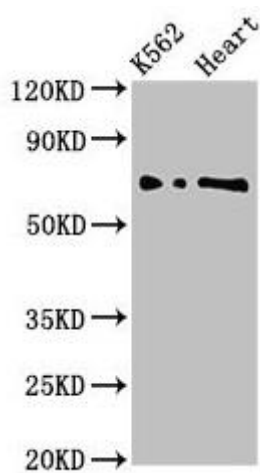
Storage:

Preservative: 0.03% Proclin 300. Constituents: 50% Glycerol, 0.01M PBS, pH 7.4

Product Images



Immunofluorescent analysis of HeLa cells using PACO52602 at dilution of 1:100 and Alexa Fluor 488-conjugated AffiniPure Goat Anti-Rabbit IgG(H+L).



Western Blot. Positive WB detected in: K562 whole cell lysate, Rat heart tissue. All lanes: L3MBTL2 antibody at 3 μ g/ml. Secondary. Goat polyclonal to rabbit IgG at 1/50000 dilution. Predicted band size: 80, 70 kDa. Observed band size: 70 kDa.