

# RBFA Antibody



PACO52586

---

## Product Information

**Size:**

50ug

**Reactivity:**

Human, Mouse, Rat

**Source:**

Rabbit

**Isotype:**

IgG

**Applications:**

ELISA, WB, IHC

**Recommended dilutions:**

ELISA:1:2000-1:10000, WB:1:500-1:5000,  
IHC:1:20-1:200

**Protein Background:**

**Gene ID:**

RBFA

**Uniprot**

Q8N0V3

**Synonyms:**

Putative ribosome-binding factor A, mitochondrial, RBFA, C18orf22

**Immunogen:**

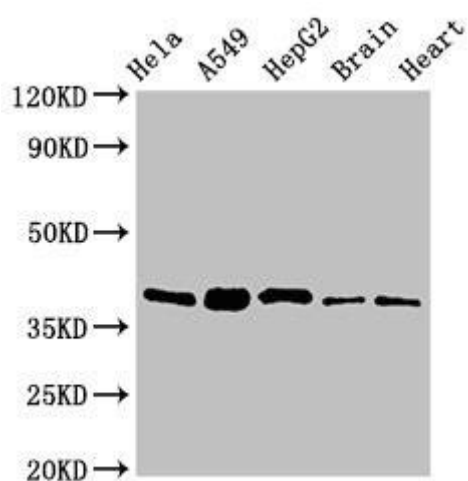
Recombinant Human Putative ribosome-binding factor A, mitochondrial protein (201-343AA).

**Storage:**

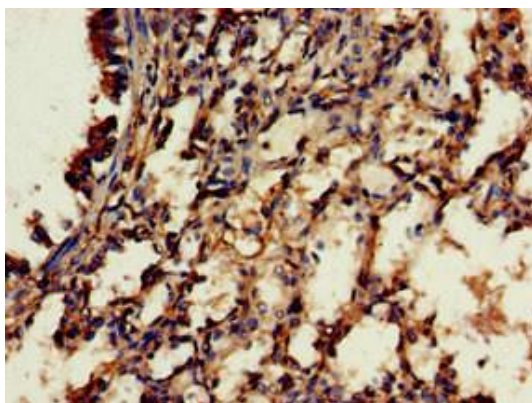
Preservative: 0.03% Proclin 300. Constituents: 50% Glycerol, 0.01M PBS, pH 7.4

## Product Images

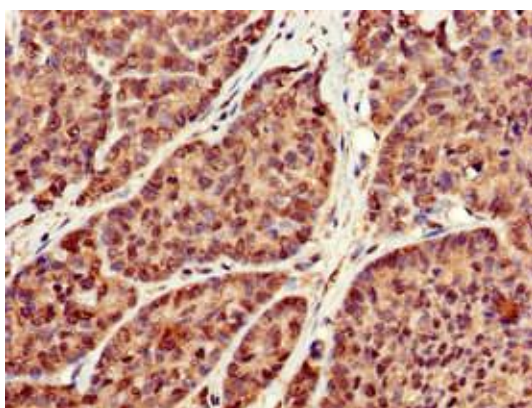
---



Western Blot. Positive WB detected in: HeLa whole cell lysate, A549 whole cell lysate, HepG2 whole cell lysate, Mouse brain tissue, Rat heart tissue. All lanes: RBFA antibody at 2 $\mu$ g/ml. Secondary. Goat polyclonal to rabbit IgG at 1/50000 dilution. Predicted band size: 39, 28 kDa. Observed band size: 39 kDa.



Immunohistochemistry of paraffin-embedded human lung tissue using PACO52586 at dilution of 1:100.



Immunohistochemistry of paraffin-embedded human ovarian cancer using PACO52586 at dilution of 1:100.