

PACO52510

Product Information

Size:

50ug

Reactivity:

Zebrafish

Source:

Rabbit

Isotype:

IgG

Applications:

ELISA, WB

Recommended dilutions:

ELISA:1:2000-1:10000, WB:1:500-1:5000

Protein Background:

Actins are highly conserved proteins that are involved in various types of cell motility and are ubiquitously expressed in all eukaryotic cells.

Gene ID:

actba

Uniprot

Q7ZVI7

Synonyms:

Actin, cytoplasmic 1 (Beta-actin-1) [Cleaved into: Actin, cytoplasmic 1, N-terminally processed], actba, bact bactin1 bactzf

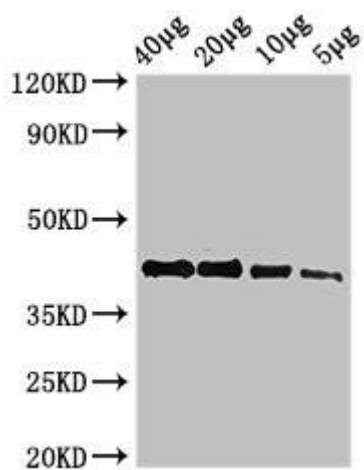
Immunogen:

Recombinant Zebrafish Actin, cytoplasmic 1 protein (2-375AA).

Storage:

Preservative: 0.03% Proclin 300. Constituents: 50% Glycerol, 0.01M PBS, pH 7.4

Product Images



Western Blot. Positive WB detected in: Zebrafish tissue 40µg, 20µg, 10µg, 5µg. All lanes: actba antibody at 2.7µg/ml. Secondary. Goat polyclonal to rabbit IgG at 1/50000 dilution. Predicted band size: 42 kDa. Observed band size: 42 kDa.