

## Product Information

**Size:**

50ug

**Reactivity:**

Human

**Source:**

Rabbit

**Isotype:**

IgG

**Applications:**

ELISA, IHC, IF

**Recommended dilutions:**

ELISA:1:2000-1:10000, IHC:1:20-1:200,  
IF:1:50-1:200

**Protein Background:**

Plays a central role in cell adhesion in hematopoietic cells. Acts by activating the integrin beta-1-3 (ITGB1, ITGB2 and ITGB3). Required for integrin-mediated platelet adhesion and leukocyte adhesion to endothelial cells. Required for activation of integrin beta-2 (ITGB2) in polymorphonuclear granulocytes (PMNs).

**Gene ID:**

FERMT3

**Uniprot**

Q86UX7

**Synonyms:**

Fermitin family homolog 3 (Kindlin-3) (MIG2-like protein) (Unc-112-related protein 2),  
FERMT3, KIND3, MIG2B, URP2

**Immunogen:**

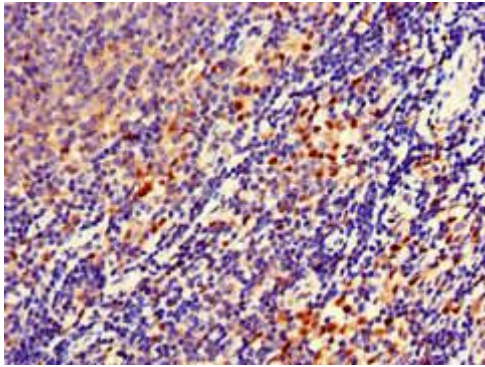
Recombinant Human Fermitin family homolog 3 protein (388-503AA).

**Storage:**

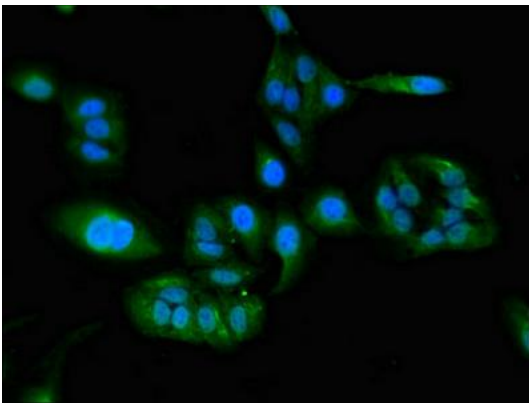
Preservative: 0.03% Proclin 300. Constituents: 50% Glycerol, 0.01M PBS, pH 7.4

## Product Images

---



Immunohistochemistry of paraffin-embedded human lymph node tissue using PACO52498 at dilution of 1:100.



Immunofluorescent analysis of HeLa cells using PACO52498 at dilution of 1:100 and Alexa Fluor 488-conjugated AffiniPure Goat Anti-Rabbit IgG(H+L).