

RAI1 Antibody



PACO52486

Product Information

Size:

50ug

Reactivity:

Human

Source:

Rabbit

Isotype:

IgG

Applications:

ELISA, WB, IHC, IF

Recommended dilutions:

ELISA:1:2000-1:10000, WB:1:500-1:5000,
IHC:1:20-1:200, IF:1:50-1:200

Protein Background:

Transcriptional regulator of the circadian clock components: CLOCK, ARNTL/BMAL1, ARNTL2/BMAL2, PER1/3, CRY1/2, NR1D1/2 and RORA/C. Positively regulates the transcriptional activity of CLOCK a core component of the circadian clock. Regulates transcription through chromatin remodeling by interacting with other proteins in chromatin as well as proteins in the basic transcriptional machinery. May be important for embryonic and postnatal development. May be involved in neuronal differentiation.

Gene ID:

RAI1

Uniprot

Q7Z5J4

Synonyms:

Retinoic acid, induced protein 1, RAI1, KIAA1820

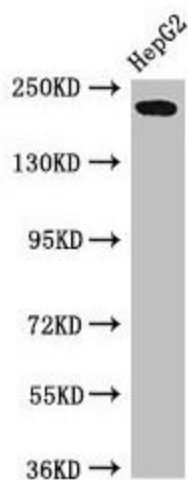
Immunogen:

Recombinant Human Retinoic acid, induced protein 1 protein (617-823AA).

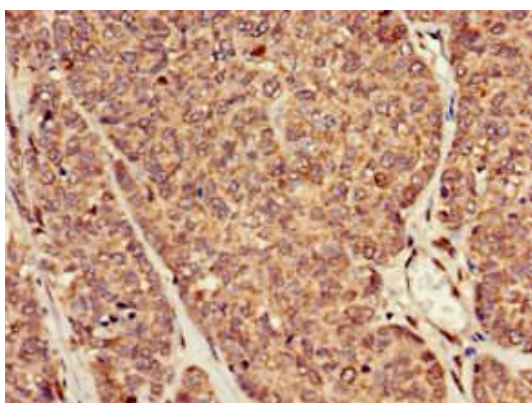
Storage:

Preservative: 0.03% Proclin 300. Constituents: 50% Glycerol, 0.01M PBS, pH 7.4

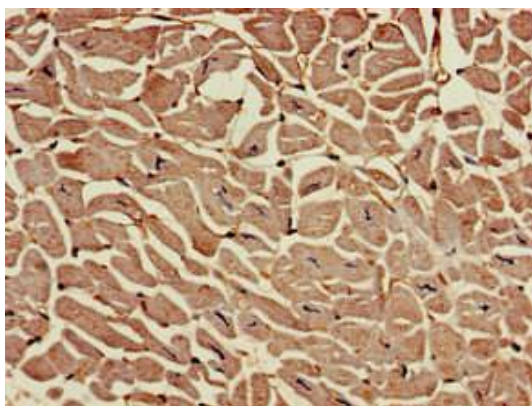
Product Images



Western Blot. Positive WB detected in: HepG2 whole cell lysate. All lanes: RAI1 antibody at 3 μ g/ml. Secondary. Goat polyclonal to rabbit IgG at 1/50000 dilution. Predicted band size: 204, 199, 176, 105 kDa. Observed band size: 204 kDa.



Immunohistochemistry of paraffin-embedded human ovarian cancer using PACO52486 at dilution of 1:100.



Immunohistochemistry of paraffin-embedded human heart tissue using PACO52486 at dilution of 1:100.