

PACO52482

Product Information

Size:

50ug

Reactivity:

Staphylococcus aureus

Source:

Rabbit

Isotype:

IgG

Applications:

ELISA, WB

Recommended dilutions:

ELISA:1:2000-1:10000, WB:1:500-1:5000

Protein Background:

Virulence factor that is important for the establishment of infection in the host.

Gene ID:

esxA

Uniprot

Q6GCJ0

Synonyms:

ESAT-6 secretion system extracellular protein A (Ess extracellular protein A), esxA

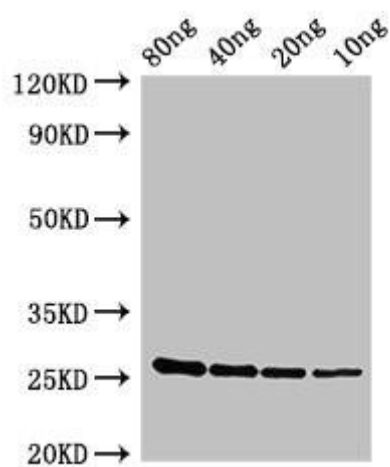
Immunogen:

Recombinant Staphylococcus aureus ESAT-6 secretion system extracellular protein A protein (1-97AA).

Storage:

Preservative: 0.03% Proclin 300. Constituents: 50% Glycerol, 0.01M PBS, pH 7.4

Product Images



Western Blot. Positive WB detected in Recombinant protein. All lanes: esxA antibody at 2.8 μ g/ml. Secondary. Goat polyclonal to rabbit IgG at 1/50000 dilution. predicted band size: 27 kDa. observed band size: 27 kDa.