

SLC3A1 Antibody



PACO52442

Product Information

Size:

50ug

Reactivity:

Human, Mouse, Rat

Source:

Rabbit

Isotype:

IgG

Applications:

ELISA, WB, IHC, IF

Recommended dilutions:

ELISA:1:2000-1:10000, WB:1:200-1:5000,
IHC:1:20-1:200, IF:1:50-1:200

Protein Background:

Involved in the high-affinity, sodium-independent transport of cystine and neutral and dibasic amino acid, (system B(0, +)-like activity). May function as an activator of SLC7A9 and be involved in the high-affinity reabsorption of cystine in the kidney tubule.

Gene ID:

SLC3A1

Uniprot

Q07837

Synonyms:

Neutral and basic amino acid, transport protein rBAT (NBAT) (D2h) (Solute carrier family 3 member 1) (b(0, +)-type amino acid, transport protein), SLC3A1, RBAT

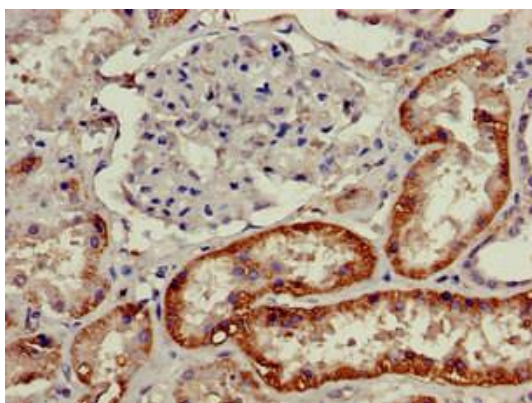
Immunogen:

Recombinant Human Neutral and basic amino acid, transport protein rBAT protein (1-68AA).

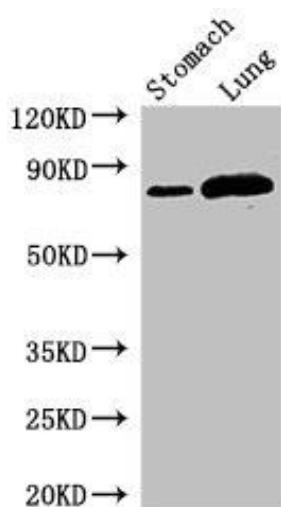
Storage:

Preservative: 0.03% Proclin 300. Constituents: 50% Glycerol, 0.01M PBS, pH 7.4

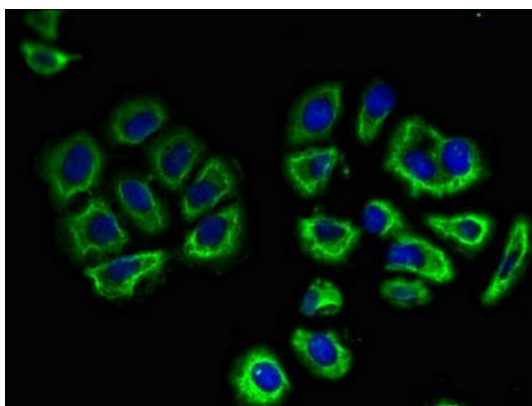
Product Images



Immunohistochemistry of paraffin-embedded human kidney tissue using PACO52442 at dilution of 1:100.



Western Blot. Positive WB detected in: Mouse stomach tissue, Rat lung tissue. All lanes: SLC3A1 antibody at 2.8µg/ml. Secondary. Goat polyclonal to rabbit IgG at 1/50000 dilution. Predicted band size: 79, 47, 46, 36, 58, 67, 64 kDa. Observed band size: 79 kDa.



Immunofluorescent analysis of A549 cells using PACO52442 at dilution of 1:100 and Alexa Fluor 488-conjugated AffiniPure Goat Anti-Rabbit IgG(H+L).