

PACO52430

---

## Product Information

**Size:**

50ug

**Reactivity:**

Human

**Source:**

Rabbit

**Isotype:**

IgG

**Applications:**

ELISA, IHC

**Recommended dilutions:**

ELISA:1:2000-1:10000, IHC:1:20-1:200

**Protein Background:**

Catalyzes the attachment of glutamate to tRNA(Glu) in a two-step reaction: glutamate is first activated by ATP to form Glu-AMP and then transferred to the acceptor end of tRNA(Glu).

**Gene ID:**

EARS2

**Uniprot**

Q5JPH6

**Synonyms:**

Probable glutamate--tRNA ligase, mitochondrial (EC 6.1.1.17) (Glutamyl-tRNA synthetase) (GluRS), EARS2, KIAA1970

**Immunogen:**

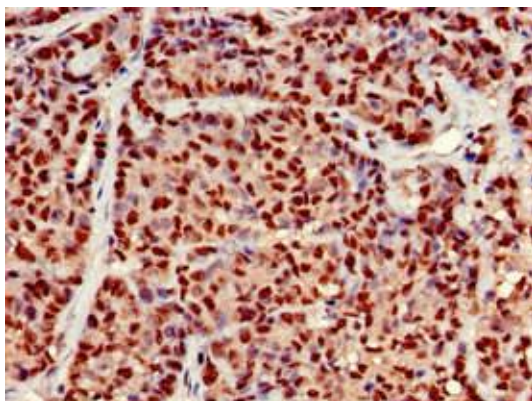
Recombinant Human Probable glutamate--tRNA ligase, mitochondrial protein (42-166AA).

**Storage:**

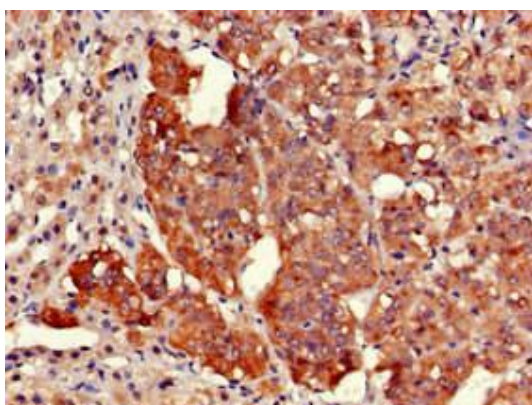
Preservative: 0.03% Proclin 300. Constituents: 50% Glycerol, 0.01M PBS, pH 7.4

## Product Images

---



Immunohistochemistry of paraffin-embedded human ovarian cancer using PACO52430 at dilution of 1:100.



Immunohistochemistry of paraffin-embedded human adrenal gland tissue using PACO52430 at dilution of 1:100.