

ALX1 Antibody



PACO52406

Product Information

Size:

50ug

Reactivity:

Human

Source:

Rabbit

Isotype:

IgG

Applications:

ELISA, WB, IHC

Recommended dilutions:

ELISA:1:2000-1:10000, WB:1:500-1:5000,
IHC:1:20-1:200

Protein Background:

Sequence-specific DNA-binding transcription factor that binds palindromic sequences within promoters and may activate or repress the transcription of a subset of genes. Most probably regulates the expression of genes involved in the development of mesenchyme-derived craniofacial structures. Early on in development, it plays a role in forebrain mesenchyme survival. May also induce epithelial to mesenchymal transition (EMT) through the expression of SNAI1.

Gene ID:

ALX1

Uniprot

Q15699

Synonyms:

ALX homeobox protein 1 (Cartilage homeoprotein 1) (CART-1), ALX1, CART1

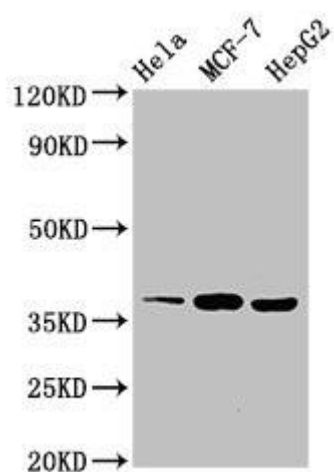
Immunogen:

Recombinant Human ALX homeobox protein 1 protein (10-304AA).

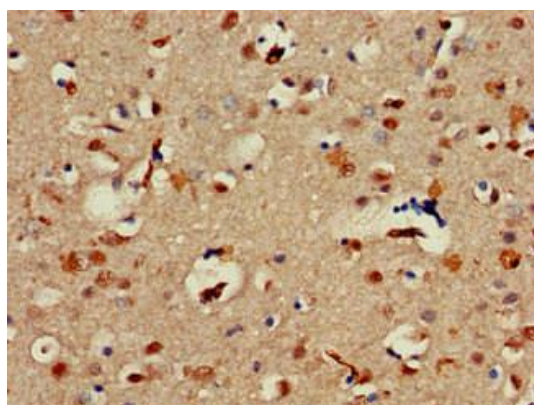
Storage:

Preservative: 0.03% Proclin 300. Constituents: 50% Glycerol, 0.01M PBS, pH 7.4

Product Images



Western Blot. Positive WB detected in: HeLa whole cell lysate, MCF-7 whole cell lysate, HepG2 whole cell lysate. All lanes: ALX1 antibody at 3 μ g/ml. Secondary. Goat polyclonal to rabbit IgG at 1/50000 dilution. Predicted band size: 37 kDa. Observed band size: 37 kDa.



Immunohistochemistry of paraffin-embedded human brain tissue using PACO52406 at dilution of 1:100.