

## Product Information

**Size:**

50ug

**Reactivity:**

Human

**Source:**

Rabbit

**Isotype:**

IgG

**Applications:**

ELISA, WB, IF

**Recommended dilutions:**

ELISA:1:2000-1:10000, WB:1:500-1:5000,  
IF:1:50-1:200

**Protein Background:**

Transcriptional activator required for the development of normal hearing, sense of balance and kidney function. Required for the expression of SLC26A4/PDS, JAG1 and COCH in a subset of epithelial cells and the development of the endolymphatic system in the inner ear. Also required for the expression of SLC4A1/AE1, SLC4A9/AE4, ATP6V1B1 and the differentiation of intercalated cells in the epithelium of distal renal tubules.

**Gene ID:**

FOXI1

**Uniprot**

Q12951

**Synonyms:**

Forkhead box protein I1 (Forkhead-related protein FKHL10) (Forkhead-related transcription factor 6) (FREAC-6) (Hepatocyte nuclear factor 3 forkhead homolog 3) (HFH-3) (HNF-3/fork-head homolog 3), FOXI1, FKHL10 FREAC6

**Immunogen:**

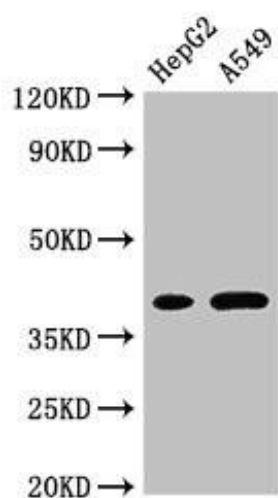
Recombinant Human Forkhead box protein I1 protein (183-343AA).

**Storage:**

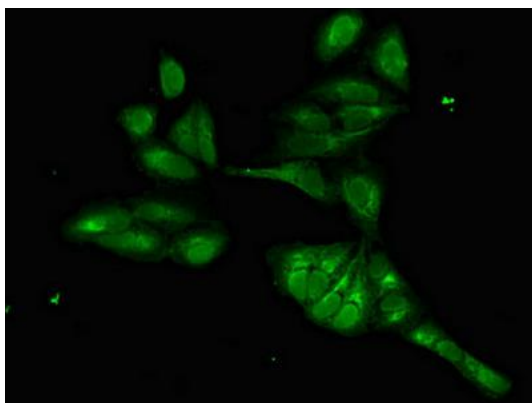
Preservative: 0.03% Proclin 300. Constituents: 50% Glycerol, 0.01M PBS, pH 7.4

## Product Images

---



Western Blot. Positive WB detected in: HepG2 whole cell lysate, A549 whole cell lysate. All lanes: FOXI1 antibody at 3 $\mu$ g/ml. Secondary. Goat polyclonal to rabbit IgG at 1/50000 dilution. Predicted band size: 41, 31 kDa. Observed band size: 41 kDa.



Immunofluorescent analysis of HeLa cells using PACO52382 at dilution of 1:100 and Alexa Fluor 488-conjugated AffiniPure Goat Anti-Rabbit IgG(H+L).