

# ASAH1 Antibody



PACO52354

---

## Product Information

**Size:**

50ug

**Reactivity:**

Human

**Source:**

Rabbit

**Isotype:**

IgG

**Applications:**

ELISA, WB, IHC

**Recommended dilutions:**

ELISA:1:2000-1:10000, WB:1:200-1:3000,  
IHC:1:20-1:200

**Protein Background:**

Hydrolyzes the sphingolipid ceramide into sphingosine and free fatty acid, .

**Gene ID:**

ASAH1

**Uniprot**

Q13510

**Synonyms:**

acid, ceramidase (AC) (ACDase) (acid, CDase) (EC 3.5.1.23) (Acylsphingosine deacylase) (N-acylsphingosine amidohydrolase) (Putative 32 kDa heart protein) (PHP32) [Cleaved into: acid, ceramidase subunit alpha; acid, ceramidase subunit beta], ASAH1, ASAH

**Immunogen:**

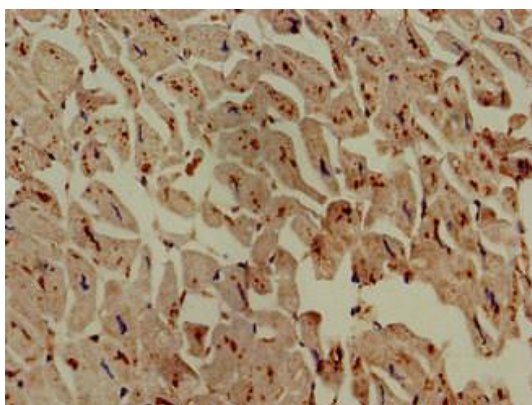
Recombinant Human acid, ceramidase protein (22-395AA).

**Storage:**

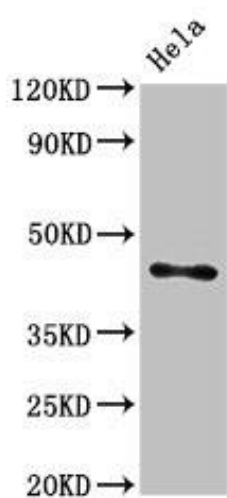
Preservative: 0.03% Proclin 300. Constituents: 50% Glycerol, 0.01M PBS, pH 7.4

## Product Images

---



Immunohistochemistry of paraffin-embedded human heart tissue using PACO52354 at dilution of 1:100.



Western Blot. Positive WB detected in: HeLa whole cell lysate. All lanes: ASA11 antibody at 3 $\mu$ g/ml. Secondary. Goat polyclonal to rabbit IgG at 1/50000 dilution. Predicted band size: 45, 47 kDa. Observed band size: 45 kDa.