

## Product Information

**Size:**

50ug

**Reactivity:**

Human

**Source:**

Rabbit

**Isotype:**

IgG

**Applications:**

ELISA, WB, IHC

**Recommended dilutions:**

ELISA:1:2000-1:10000, WB:1:500-1:5000,  
IHC:1:20-1:200

**Protein Background:**

Component of the transcription factor SL1/TIF-IB complex, which is involved in the assembly of the PIC (pre-initiation complex) during RNA polymerase I-dependent transcription. The rate of PIC formation probably is primarily dependent on the rate of association of SL1/TIF-IB with the rDNA promoter. SL1/TIF-IB is involved in stabilization of nucleolar transcription factor 1/UBTF on rDNA. Formation of SL1/TIF-IB excludes the association of TBP with TFIID subunits.

**Gene ID:**

TAF1A

**Uniprot**

Q15573

**Synonyms:**

TATA box-binding protein-associated factor RNA polymerase I subunit A (RNA polymerase I-specific TBP-associated factor 48 kDa) (TAFI48) (TATA box-binding protein-associated factor 1A) (TBP-associated factor 1A) (Transcription factor SL1) (Transcription initiation factor SL1/TIF-IB subunit A), TAF1A

**Immunogen:**

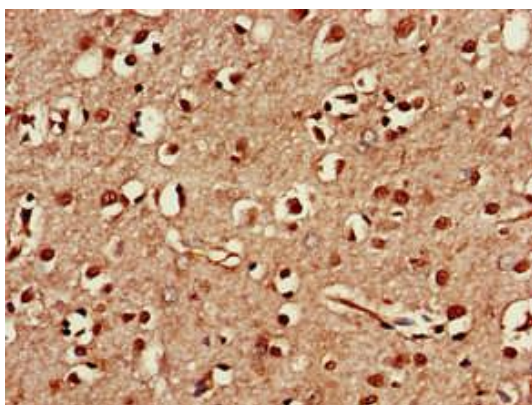
Recombinant Human TATA box-binding protein-associated factor RNA polymerase I subunit A protein (251-325AA).

**Storage:**

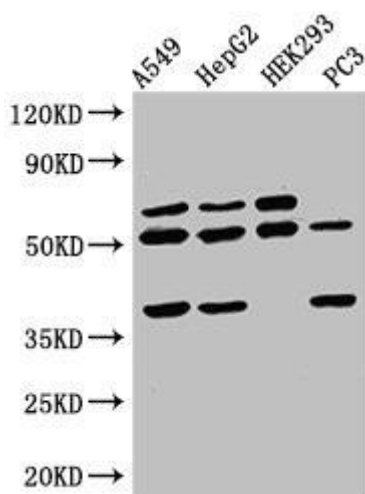
Preservative: 0.03% Proclin 300. Constituents: 50% Glycerol, 0.01M PBS, pH 7.4

## Product Images

---



Immunohistochemistry of paraffin-embedded human brain tissue using PACO52306 at dilution of 1:100.



Western Blot. Positive WB detected in: A549 whole cell lysate, HepG2 whole cell lysate, HEK293 whole cell lysate, PC-3 whole cell lysate. All lanes: TAF1A antibody at 2.5 $\mu$ g/ml. Secondary. Goat polyclonal to rabbit IgG at 1/50000 dilution. Predicted band size: 53, 40 kDa. Observed band size: 53, 40 kDa.