

MAN2A1 Antibody



PACO52294

Product Information

Size:

50ug

Reactivity:

Human

Source:

Rabbit

Isotype:

IgG

Applications:

ELISA, WB, IHC, IF

Recommended dilutions:

ELISA:1:2000-1:10000, WB:1:500-1:5000,
IHC:1:20-1:200, IF:1:50-1:200

Protein Background:

Catalyzes the first committed step in the biosynthesis of complex N-glycans. It controls conversion of high mannose to complex N-glycans; the final hydrolytic step in the N-glycan maturation pathway.

Gene ID:

MAN2A1

Uniprot

Q16706

Synonyms:

Alpha-mannosidase 2 (EC 3.2.1.114) (Golgi alpha-mannosidase II) (AMan II) (Man II) (Mannosidase alpha class 2A member 1) (Mannosyl-oligosaccharide 1,3-1,6-alpha-mannosidase), MAN2A1, MANA2

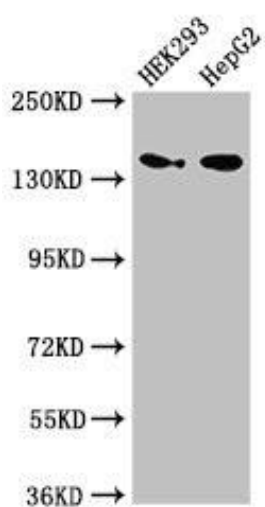
Immunogen:

Recombinant Human Alpha-mannosidase 2 protein (31-181AA).

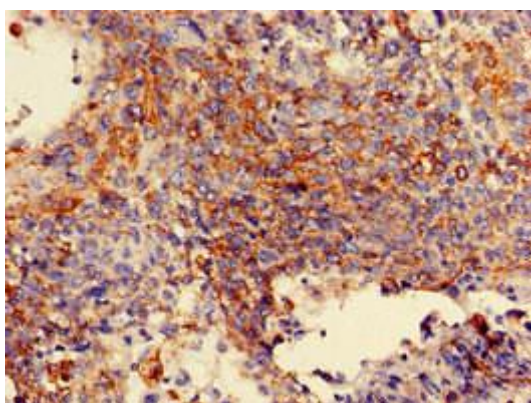
Storage:

Preservative: 0.03% Proclin 300. Constituents: 50% Glycerol, 0.01M PBS, pH 7.4

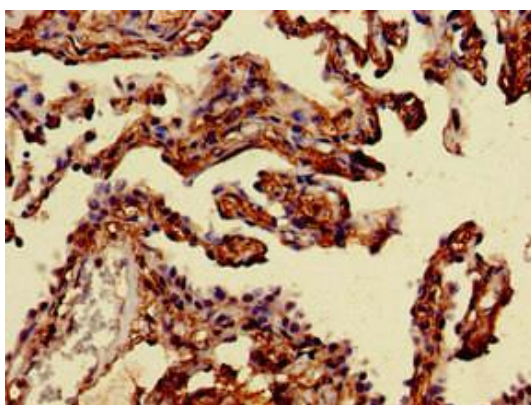
Product Images



Western Blot. Positive WB detected in: HEK293 whole cell lysate, HepG2 whole cell lysate. All lanes: MAN2A1 antibody at 3.5 μ g/ml. Secondary: Goat polyclonal to rabbit IgG at 1/50000 dilution. Predicted band size: 132 kDa. Observed band size: 150 kDa.



Immunohistochemistry of paraffin-embedded human cervical cancer using PACO52294 at dilution of 1:100.



Immunohistochemistry of paraffin-embedded human lung cancer using PACO52294 at dilution of 1:100.