

# SAP9 Antibody



PACO52278

---

## Product Information

**Size:**

50ug

**Reactivity:**

Yeast

**Source:**

Rabbit

**Isotype:**

IgG

**Applications:**

ELISA, WB

**Recommended dilutions:**

ELISA:1:2000-1:10000, WB:1:500-1:5000

**Protein Background:****Gene ID:**

SAP9

**Uniprot**

O42779

**Synonyms:**

Candidapepsin-9 (EC 3.4.23.24) (ACP 9) (Aspartate protease 9) (Secreted aspartic protease 9), SAP9

**Immunogen:**

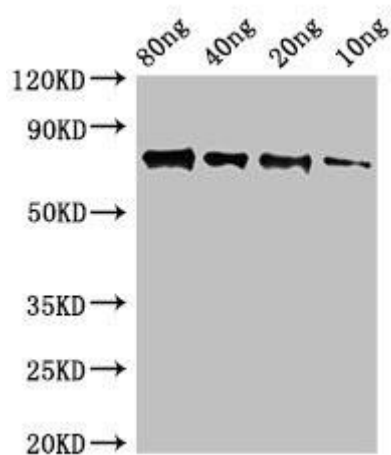
Recombinant Yeast Candidapepsin-9 protein (18-544AA).

**Storage:**

Preservative: 0.03% Proclin 300. Constituents: 50% Glycerol, 0.01M PBS, pH 7.4

## Product Images

---



Western Blot. Positive WB detected in Recombinant protein. All lanes: SAP9 antibody at 2.5µg/ml. Secondary. Goat polyclonal to rabbit IgG at 1/50000 dilution. predicted band size: 75 kDa. observed band size: 75 kDa.