

# hfb1 Antibody



PACO52226

---

## Product Information

**Size:**

50ug

**Reactivity:**

Hypocrea jecorina

**Source:**

Rabbit

**Isotype:**

IgG

**Applications:**

ELISA, WB

**Recommended dilutions:**

ELISA:1:2000-1:10000, WB:1:500-1:5000

**Protein Background:**

Contributes to surface hydrophobicity, which is important for processes such as association of hyphae in reproductive structures, dispersal of aerial spores and adhesion of pathogens to host structures.

**Gene ID:**

hfb1

**Uniprot**

P52754

**Synonyms:**

Hydrophobin-1 (Hydrophobin I) (HFBI), hfb1

**Immunogen:**

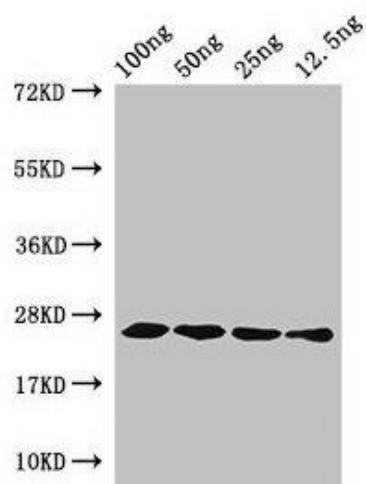
Recombinant Hypocrea jecorina Hydrophobin-1 protein (23-97AA).

**Storage:**

Preservative: 0.03% Proclin 300. Constituents: 50% Glycerol, 0.01M PBS, pH 7.4

## Product Images

---



Western Blot. Positive WB detected in Recombinant protein. All lanes: hfb1 antibody at 4 $\mu$ g/ml. Secondary. Goat polyclonal to rabbit IgG at 1/50000 dilution. predicted band size: 25 kDa. observed band size: 25 kDa.