

PACO52222

Product Information

Size:

50ug

Reactivity:

Slime mold

Source:

Rabbit

Isotype:

IgG

Applications:

ELISA, WB

Recommended dilutions:

ELISA:1:2000-1:10000, WB:1:500-1:5000

Protein Background:

Binds F-actin and nucleates actin assembly. Major high affinity link between the plasma membrane and the cortical actin network.

Gene ID:

ponA

Uniprot

P54660

Synonyms:

Ponticulín, ponA

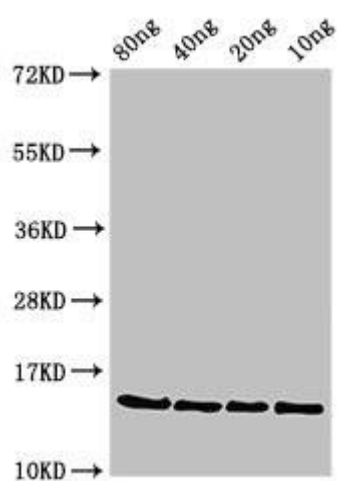
Immunogen:

Recombinant Slime mold Ponticulín protein (23-118AA).

Storage:

Preservative: 0.03% Proclin 300. Constituents: 50% Glycerol, 0.01M PBS, pH 7.4

Product Images



Western Blot. Positive WB detected in Recombinant protein. All lanes: ponA antibody at 3 μ g/ml. Secondary. Goat polyclonal to rabbit IgG at 1/50000 dilution. predicted band size: 15 kDa. observed band size: 15 kDa.