

PACO52218

Product Information

Size:

50ug

Reactivity:

Prochlorothrix hollandica

Source:

Rabbit

Isotype:

IgG

Applications:

ELISA, WB

Recommended dilutions:

ELISA:1:2000-1:10000, WB:1:500-1:5000

Protein Background:

Participates in electron transfer between P700 and the cytochrome b6-f complex in photosystem I.

Gene ID:

petE

Uniprot

P50057

Synonyms:

Plastocyanin, petE

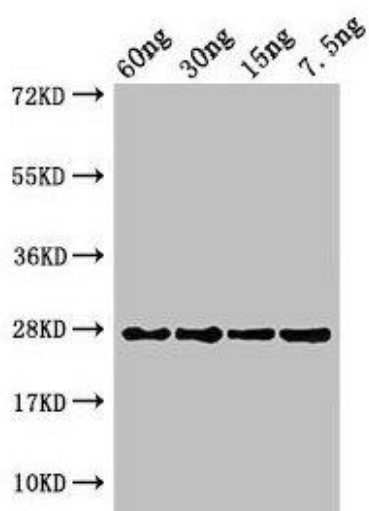
Immunogen:

Recombinant Prochlorothrix hollandica Plastocyanin protein (35-131AA).

Storage:

Preservative: 0.03% Proclin 300. Constituents: 50% Glycerol, 0.01M PBS, pH 7.4

Product Images



Western Blot. Positive WB detected in Recombinant protein. All lanes: petE antibody at 3 μ g/ml. Secondary. Goat polyclonal to rabbit IgG at 1/50000 dilution. predicted band size: 27 kDa. observed band size: 27 kDa.