

PACO52174

Product Information

Size:

50ug

Reactivity:

Soybean

Source:

Rabbit

Isotype:

IgG

Applications:

ELISA, WB

Recommended dilutions:

ELISA:1:2000-1:10000, WB:1:500-1:5000

Protein Background:

RuBisCO catalyzes two reactions: the carboxylation of D-ribulose 1,5-bisphosphate, the primary event in carbon dioxide fixation, as well as the oxidative fragmentation of the pentose substrate in the photorespiration process. Both reactions occur simultaneously and in competition at the same active site.

Gene ID:

rbcl

Uniprot

P27066

Synonyms:

Ribulose biphosphate carboxylase large chain (RuBisCO large subunit) (EC 4.1.1.39), rbcl

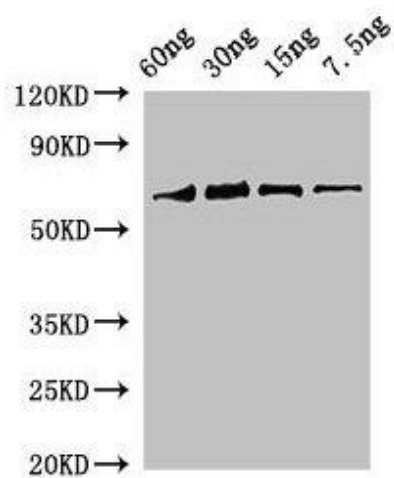
Immunogen:

Recombinant Soybean Ribulose biphosphate carboxylase large chain protein (3-475AA).

Storage:

Preservative: 0.03% Proclin 300. Constituents: 50% Glycerol, 0.01M PBS, pH 7.4

Product Images



Western Blot. Positive WB detected in Recombinant protein. All lanes: rbcL antibody at 2 μ g/ml. Secondary. Goat polyclonal to rabbit IgG at 1/50000 dilution. Predicted band size: 69 kDa. Observed band size: 69 kDa.