

# Perlwapin Antibody



PACO52134

---

## Product Information

**Size:**

50ug

**Reactivity:**

Haliotis laevigata

**Source:**

Rabbit

**Isotype:**

IgG

**Applications:**

ELISA, WB

**Recommended dilutions:**

ELISA:1:2000-1:10000, WB:1:500-1:5000

**Protein Background:**

Inhibits growth of calcium carbonate crystals. May inhibit growth of certain crystallographic planes in the mineral phase of nacre in the shell.

**Gene ID:****Uniprot**

P84811

**Synonyms:**

Perlwapin

**Immunogen:**

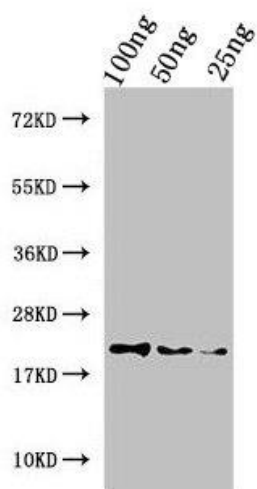
Recombinant Haliotis laevigata Perlwapin protein (1-134AA).

**Storage:**

Preservative: 0.03% Proclin 300. Constituents: 50% Glycerol, 0.01M PBS, pH 7.4

## Product Images

---



Western Blot. Positive WB detected in Recombinant protein. All lanes: Perlwapin antibody at 3 $\mu$ g/ml. Secondary. Goat polyclonal to rabbit IgG at 1/50000 dilution. Predicted band size: 20 kDa. Observed band size: 20 kDa.