

CHRNB1 Antibody



PACO52098

Product Information

Size:

50ug

Reactivity:

Human

Source:

Rabbit

Isotype:

IgG

Applications:

ELISA, WB, IHC, IF

Recommended dilutions:

ELISA:1:2000-1:10000, WB:1:500-1:5000,
IHC:1:20-1:200, IF:1:50-1:200

Protein Background:

After binding acetylcholine, the AChR responds by an extensive change in conformation that affects all subunits and leads to opening of an ion-conducting channel across the plasma membrane.

Gene ID:

CHRNB1

Uniprot

P11230

Synonyms:

Acetylcholine receptor subunit beta, CHRNB1, ACHRB CHRNB

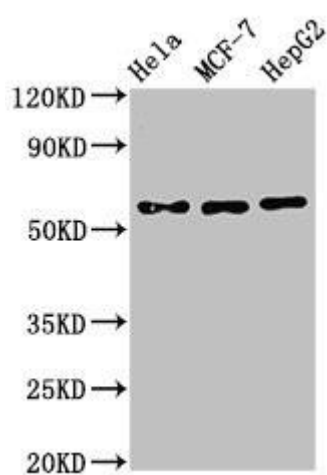
Immunogen:

Recombinant Human Acetylcholine receptor subunit β protein (24-244AA).

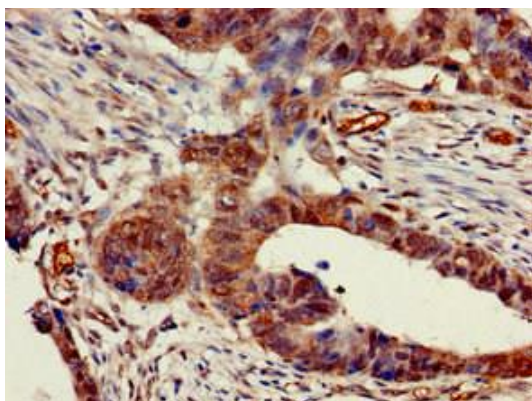
Storage:

Preservative: 0.03% Proclin 300. Constituents: 50% Glycerol, 0.01M PBS, pH 7.4

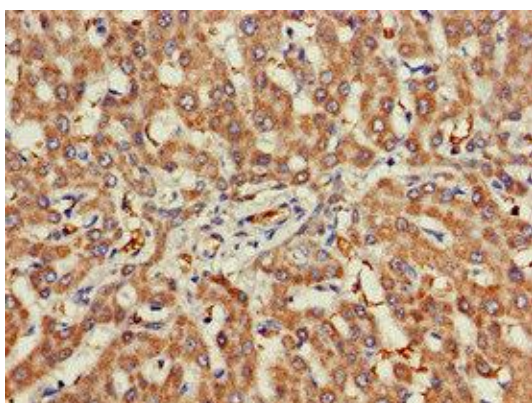
Product Images



Western Blot. Positive WB detected in: HeLa whole cell lysate, MCF-7 whole cell lysate, HepG2 whole cell lysate. All lanes: CHRNB1 antibody at 3 μ g/ml. Secondary. Goat polyclonal to rabbit IgG at 1/50000 dilution. Predicted band size: 57, 50 kDa. Observed band size: 57 kDa.



Immunohistochemistry of paraffin-embedded human colon cancer using PACO52098 at dilution of 1:100.



Immunohistochemistry of paraffin-embedded human liver cancer using PACO52098 at dilution of 1:100.