

Product Information

Size:

50ug

Reactivity:

Human

Source:

Rabbit

Isotype:

IgG

Applications:

ELISA, IHC, IF

Recommended dilutions:

ELISA:1:2000-1:10000, IHC:1:20-1:200,
IF:1:50-1:200

Protein Background:

Ras proteins bind GDP/GTP and possess intrinsic GTPase activity. Plays an important role in the regulation of cell proliferation. Plays a role in promoting oncogenic events by inducing transcriptional silencing of tumor suppressor genes (TSGs) in colorectal cancer (CRC) cells in a ZNF304-dependent manner.

Gene ID:

KRAS

Uniprot

P01116

Synonyms:

GTPase KRas (K-Ras 2) (Ki-Ras) (c-K-ras) (c-Ki-ras) [Cleaved into: GTPase KRas, N-terminally processed], KRAS, KRAS2 RASK2

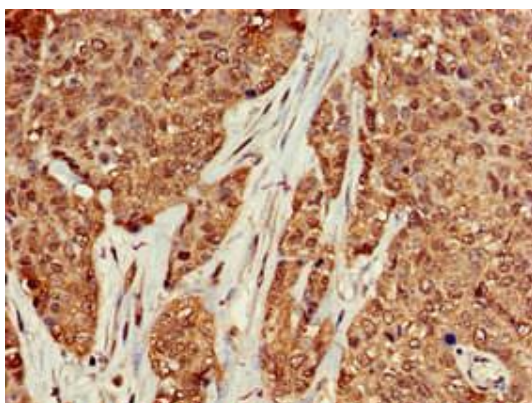
Immunogen:

Recombinant Human GTPase KRas protein (2-168AA).

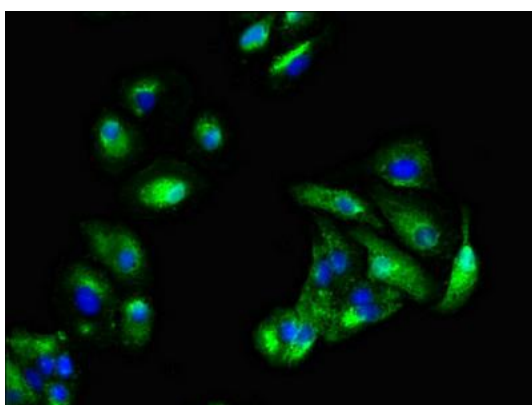
Storage:

Preservative: 0.03% Proclin 300. Constituents: 50% Glycerol, 0.01M PBS, pH 7.4

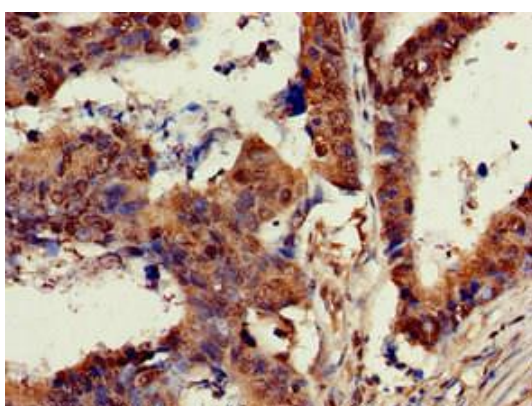
Product Images



Immunohistochemistry of paraffin-embedded human ovarian cancer using PACO52090 at dilution of 1:100.



Immunofluorescent analysis of HepG2 cells using PACO52090 at dilution of 1:100 and Alexa Fluor 488-conjugated AffiniPure Goat Anti-Rabbit IgG(H+L).



Immunohistochemistry of paraffin-embedded human colon cancer using PACO52090 at dilution of 1:100.