

PACO52082

---

## Product Information

**Size:**

50ug

**Reactivity:**

Human

**Source:**

Rabbit

**Isotype:**

IgG

**Applications:**

ELISA, IHC

**Recommended dilutions:**

ELISA:1:2000-1:10000, IHC:1:20-1:200

**Protein Background:**

Plays an important role in the regulation of interdigestive gastrointestinal motility and indirectly causes rhythmic contraction of duodenal and colonic smooth muscle.

**Gene ID:**

MLN

**Uniprot**

P12872

**Synonyms:**

Promotilin [Cleaved into: Motilin; Motilin-associated peptide (MAP)], MLN

**Immunogen:**

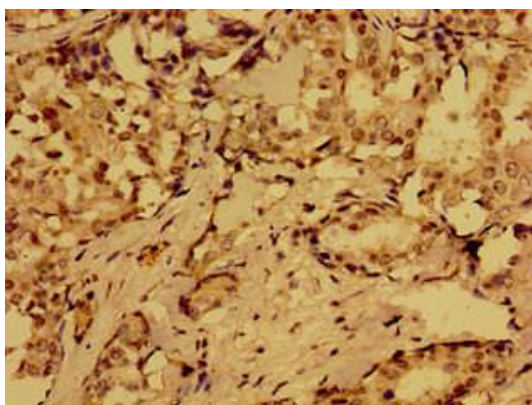
Recombinant Human Promotilin protein (26-115AA).

**Storage:**

Preservative: 0.03% Proclin 300. Constituents: 50% Glycerol, 0.01M PBS, pH 7.4

## Product Images

---



Immunohistochemistry of paraffin-embedded human breast cancer using PACO52082 at dilution of 1:100.