

# WISP3 Antibody



PACO52050

---

## Product Information

**Size:**

50ug

**Reactivity:**

Human, Mouse, Rat

**Source:**

Rabbit

**Isotype:**

IgG

**Applications:**

ELISA, WB, IHC

**Recommended dilutions:**

ELISA:1:2000-1:10000, WB:1:500-1:5000,  
IHC:1:20-1:200

**Protein Background:**

Appears to be required for normal postnatal skeletal growth and cartilage homeostasis.

**Gene ID:**

WISP3

**Uniprot**

O95389

**Synonyms:**

WNT1-inducible-signaling pathway protein 3 (WISP-3) (CCN family member 6), WISP3, CCN6

**Immunogen:**

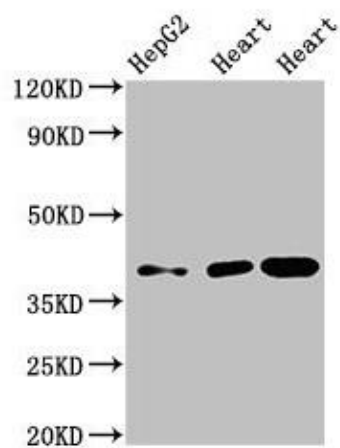
Recombinant Human WNT1-inducible-signaling pathway protein 3 protein (201-372AA).

**Storage:**

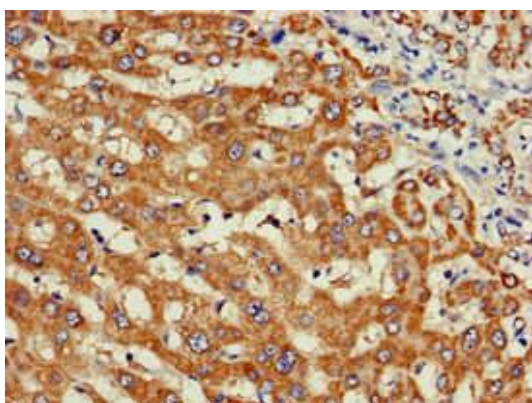
Preservative: 0.03% Proclin 300. Constituents: 50% Glycerol, 0.01M PBS, pH 7.4

## Product Images

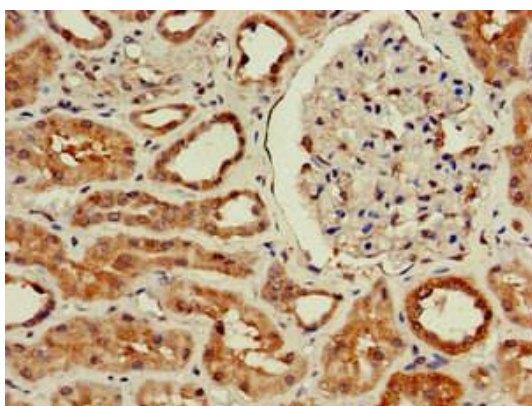
---



Western Blot. Positive WB detected in: HepG2 whole cell lysate, Rat heart tissue, Mouse heart tissue. All lanes: WISP3 antibody at 3.5 $\mu$ g/ml. Secondary. Goat polyclonal to rabbit IgG at 1/50000 dilution. Predicted band size: 40, 42 kDa. Observed band size: 40 kDa.



Immunohistochemistry of paraffin-embedded human liver cancer using PACO52050 at dilution of 1:100.



Immunohistochemistry of paraffin-embedded human kidney tissue using PACO52050 at dilution of 1:100.