

# TMEM43 Antibody



PACO52010

---

## Product Information

**Size:**

50ug

**Reactivity:**

Human, Mouse

**Source:**

Rabbit

**Isotype:**

IgG

**Applications:**

ELISA, WB, IHC

**Recommended dilutions:**

ELISA:1:2000-1:10000, WB:1:500-1:5000,  
IHC:1:20-1:200

**Protein Background:**

May have an important role in maintaining nuclear envelope structure by organizing protein complexes at the inner nuclear membrane. Required for retaining emerin at the inner nuclear membrane.

**Gene ID:**

TMEM43

**Uniprot**

Q9BTV4

**Synonyms:**

Transmembrane protein 43 (Protein LUMA), TMEM43

**Immunogen:**

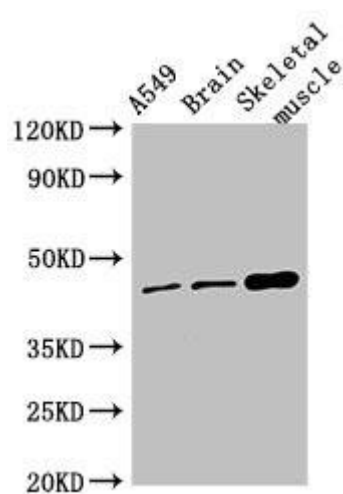
Recombinant Human Transmembrane protein 43 protein (178-312AA).

**Storage:**

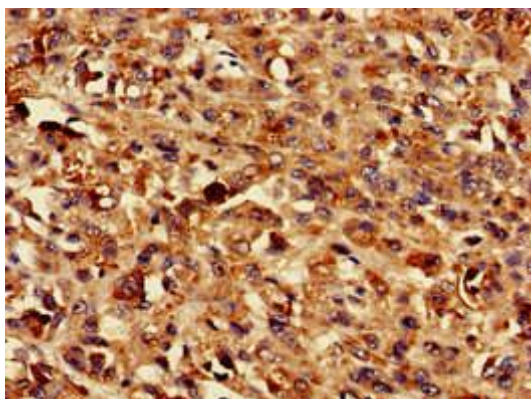
Preservative: 0.03% Proclin 300. Constituents: 50% Glycerol, 0.01M PBS, pH 7.4

## Product Images

---



Western Blot. Positive WB detected in: A549 whole cell lysate, Mouse brain tissue, Mouse skeletal muscle tissue. All lanes: TMEM43 antibody at 4 $\mu$ g/ml. Secondary. Goat polyclonal to rabbit IgG at 1/50000 dilution. Predicted band size: 45 kDa. Observed band size: 45 kDa.



Immunohistochemistry of paraffin-embedded human melanoma using PACO52010 at dilution of 1:100.