

SLIT3 Antibody



PACO51962

Product Information

Size:

50ug

Reactivity:

Human

Source:

Rabbit

Isotype:

IgG

Applications:

ELISA, IHC

Recommended dilutions:

ELISA:1:2000-1:10000, IHC:1:20-1:200

Protein Background:

May act as molecular guidance cue in cellular migration, and function may be mediated by interaction with roundabout homolog receptors.

Gene ID:

SLIT3

Uniprot

O75094

Synonyms:

Slit homolog 3 protein (Slit-3) (Multiple epidermal growth factor-like domains protein 5) (Multiple EGF-like domains protein 5), SLIT3, KIAA0814 MEGF5 SLIL2

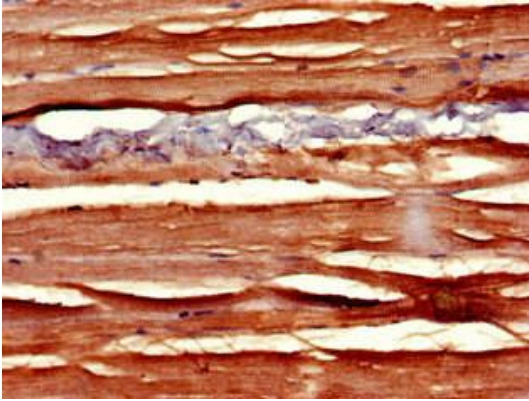
Immunogen:

Recombinant Human Slit homolog 3 protein (1199-1494AA).

Storage:

Preservative: 0.03% Proclin 300. Constituents: 50% Glycerol, 0.01M PBS, pH 7.4

Product Images



Immunohistochemistry of paraffin-embedded human skeletal muscle tissue using PACO51962 at dilution of 1:100.