

### Product Information

**Size:**

50ug

**Reactivity:**

Human

**Source:**

Rabbit

**Isotype:**

IgG

**Applications:**

ELISA, IHC, IF

**Recommended dilutions:**

ELISA:1:2000-1:10000, IHC:1:20-1:200,  
IF:1:50-1:200

**Protein Background:**

Receptor for prostaglandin E2 (PGE2); the EP3 receptor may be involved in inhibition of gastric acid, secretion, modulation of neurotransmitter release in central and peripheral neurons, inhibition of sodium and water reabsorption in kidney tubulus and contraction in uterine smooth muscle. The activity of this receptor can couple to both the inhibition of adenylate cyclase mediated by G-I proteins, and to an elevation of intracellular calcium. The various isoforms have identical ligand binding properties but can interact with different second messenger systems.

**Gene ID:**

PTGER3

**Uniprot**

P43115

**Synonyms:**

Prostaglandin E2 receptor EP3 subtype (PGE receptor EP3 subtype) (PGE2 receptor EP3 subtype) (PGE2-R) (Prostanoid EP3 receptor), PTGER3

**Immunogen:**

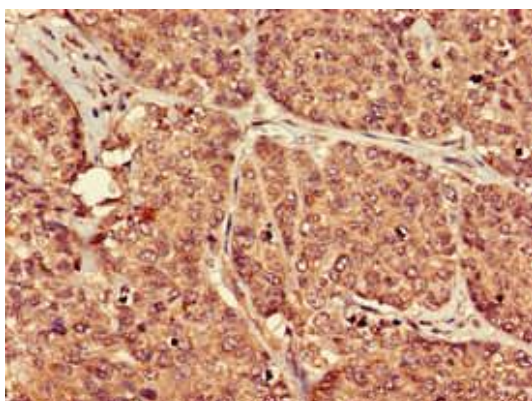
Recombinant Human Prostaglandin E2 receptor EP3 subtype protein (1-49AA).

**Storage:**

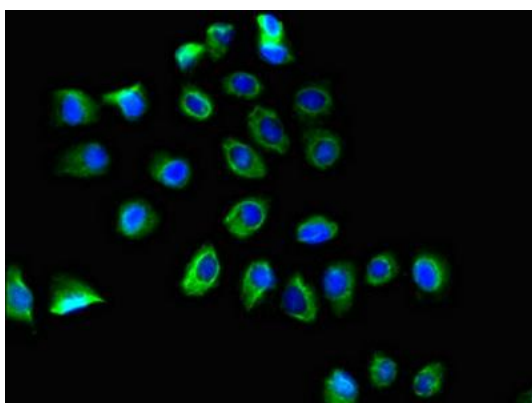
Preservative: 0.03% Proclin 300. Constituents: 50% Glycerol, 0.01M PBS, pH 7.4

## Product Images

---



Immunohistochemistry of paraffin-embedded human ovarian cancer using PACO51906 at dilution of 1:100.



Immunofluorescent analysis of A549 cells using PACO51906 at dilution of 1:100 and Alexa Fluor 488-conjugated AffiniPure Goat Anti-Rabbit IgG(H+L).