

Product Information

Size:

50ug

Reactivity:

Human

Source:

Rabbit

Isotype:

IgG

Applications:

ELISA, WB, IF

Recommended dilutions:

ELISA:1:2000-1:10000, WB:1:2000-1:10000,
IF:1:50-1:500

Protein Background:

The 26S protease is involved in the ATP-dependent degradation of ubiquitinated proteins. The regulatory (or ATPase) complex confers ATP dependency and substrate specificity to the 26S complex.

Gene ID:

PSMC5

Uniprot

P62195

Synonyms:

26S proteasome regulatory subunit 8 (26S proteasome AAA-ATPase subunit RPT6) (Proteasome 26S subunit ATPase 5) (Proteasome subunit p45) (Thyroid hormone receptor-interacting protein 1) (TRIP1) (p45/SUG), PSMC5, SUG1

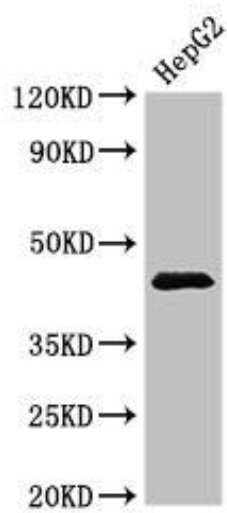
Immunogen:

Recombinant Human 26S proteasome regulatory subunit 8 protein (253-324AA).

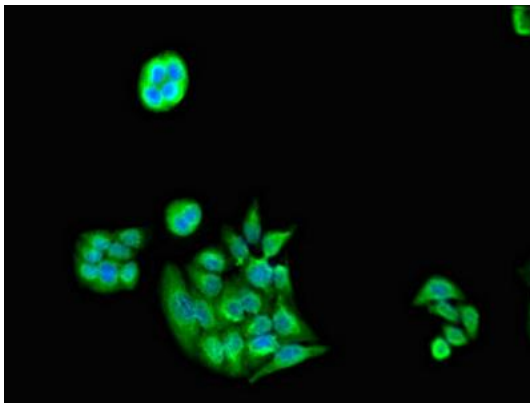
Storage:

Preservative: 0.03% Proclin 300. Constituents: 50% Glycerol, 0.01M PBS, pH 7.4

Product Images



Western Blot. Positive WB detected in: HepG2 whole cell lysate. All lanes: PSMC5 antibody at 3.5 μ g/ml. Secondary. Goat polyclonal to rabbit IgG at 1/50000 dilution. Predicted band size: 46, 45 kDa. Observed band size: 46 kDa.



Immunofluorescent analysis of PC-3 cells using PACO51898 at dilution of 1:100 and Alexa Fluor 488-conjugated AffiniPure Goat Anti-Rabbit IgG(H+L).