

Product Information

Size:

50ug

Reactivity:

Human

Source:

Rabbit

Isotype:

IgG

Applications:

ELISA, WB, IHC, IF, IP

Recommended dilutions:

ELISA:1:2000-1:10000, WB:1:500-1:5000,
IHC:1:20-1:200, IF:1:50-1:200, IP:1:200-
1:2000,

Protein Background:

The proteasome is a multicatalytic proteinase complex which is characterized by its ability to cleave peptides with Arg, Phe, Tyr, Leu, and Glu adjacent to the leaving group at neutral or slightly basic pH. The proteasome has an ATP-dependent proteolytic activity. Mediates the lipopolysaccharide-induced signal transduction in the macrophage proteasome. Might be involved in the anti-inflammatory response of macrophages during the interaction with *C. albicans* heat-inactivated cells.

Gene ID:

PSMA1

Uniprot

P25786

Synonyms:

Proteasome subunit alpha type-1 (EC 3.4.25.1) (30 kDa prosomal protein) (PROS-30) (Macropain subunit C2) (Multicatalytic endopeptidase complex subunit C2) (Proteasome component C2) (Proteasome nu chain), PSMA1, HC2 NU PROS30 PSC2

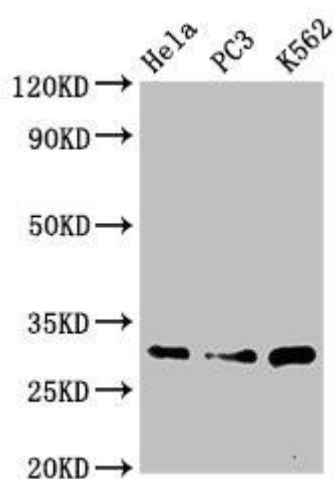
Immunogen:

Recombinant Human Proteasome subunit α type-1 protein (163-263AA).

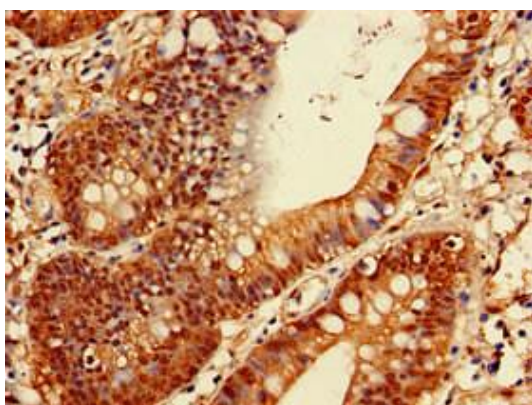
Storage:

Preservative: 0.03% Proclin 300. Constituents: 50% Glycerol, 0.01M PBS, pH 7.4

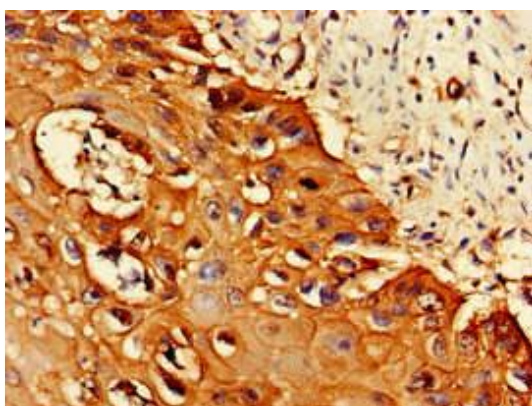
Product Images



Western Blot. Positive WB detected in: HeLa whole cell lysate, PC-3 whole cell lysate, K562 whole cell lysate. All lanes: PSMA1 antibody at 3.4 μ g/ml. Secondary. Goat polyclonal to rabbit IgG at 1/50000 dilution. Predicted band size: 30, 31 kDa. Observed band size: 30 kDa.



Immunohistochemistry of paraffin-embedded human colon cancer using PACO51886 at dilution of 1:100.



Immunohistochemistry of paraffin-embedded human cervical cancer using PACO51886 at dilution of 1:100.