

PPP2R2A Antibody



PACO51846

Product Information

Size:

50ug

Reactivity:

Human, Mouse, Rat

Source:

Rabbit

Isotype:

IgG

Applications:

ELISA, WB, IHC, IF

Recommended dilutions:

ELISA:1:2000-1:10000, WB:1:500-1:5000,
IHC:1:20-1:200, IF:1:50-1:200

Protein Background:

The B regulatory subunit might modulate substrate selectivity and catalytic activity, and also might direct the localization of the catalytic enzyme to a particular subcellular compartment.

Gene ID:

PPP2R2A

Uniprot

P63151

Synonyms:

Serine/threonine-protein phosphatase 2A 55 kDa regulatory subunit B alpha isoform (PP2A subunit B isoform B55-alpha) (PP2A subunit B isoform PR55-alpha) (PP2A subunit B isoform R2-alpha) (PP2A subunit B isoform alpha), PPP2R2A

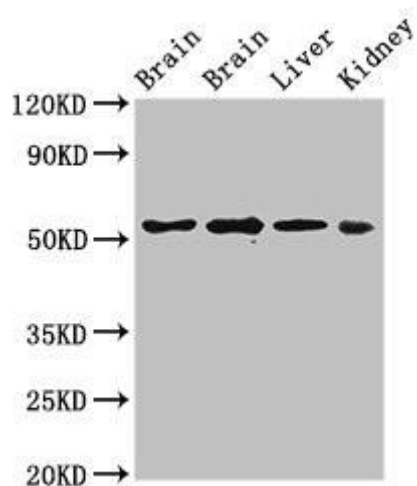
Immunogen:

Recombinant Human Serine/threonine-protein phosphatase 2A 55 kDa regulatory subunit B α isoform protein (2-149AA).

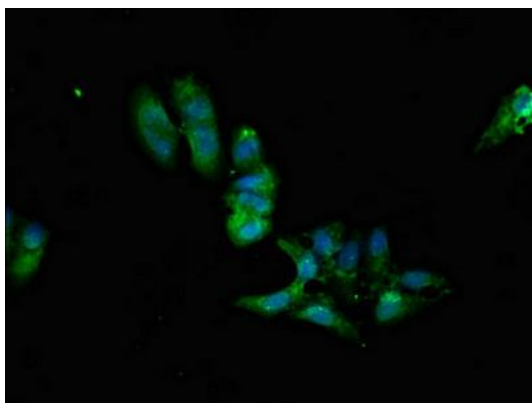
Storage:

Preservative: 0.03% Proclin 300. Constituents: 50% Glycerol, 0.01M PBS, pH 7.4

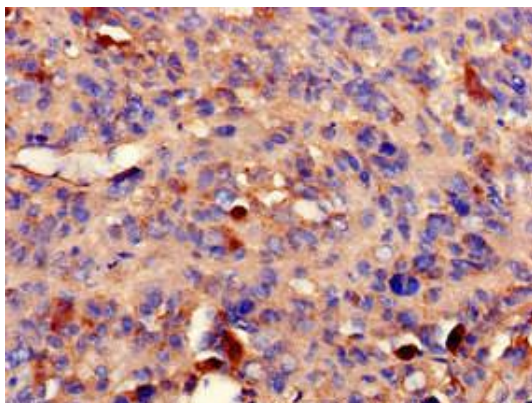
Product Images



Western Blot. Positive WB detected in: Rat brain tissue, Mouse brain tissue, Mouse liver tissue, Mouse kidney tissue. All lanes: PPP2R2A antibody at 3 μ g/ml. Secondary. Goat polyclonal to rabbit IgG at 1/50000 dilution. Predicted band size: 52, 53 kDa. Observed band size: 52 kDa.



Immunofluorescent analysis of HeLa cells using PACO51846 at dilution of 1:100 and Alexa Fluor 488-conjugated AffiniPure Goat Anti-Rabbit IgG(H+L).



Immunohistochemistry of paraffin-embedded human melanoma using PACO51846 at dilution of 1:100.