

### Product Information

**Size:**

50ug

**Reactivity:**

Human

**Source:**

Rabbit

**Isotype:**

IgG

**Applications:**

ELISA, WB, IHC

**Recommended dilutions:**

ELISA:1:2000-1:10000, WB:1:500-1:5000,  
IHC:1:20-1:200

**Protein Background:**

Lipase with broad substrate specificity. Can hydrolyze both phospholipids and galactolipids. Acts preferentially on monoglycerides, phospholipids and galactolipids. Contributes to milk fat hydrolysis.

**Gene ID:**

PNLIPRP2

**Uniprot**

P54317

**Synonyms:**

Pancreatic lipase-related protein 2 (PL-RP2) (EC 3.1.1.26) (EC 3.1.1.3) (Galactolipase),  
PNLIPRP2, PLRP2

**Immunogen:**

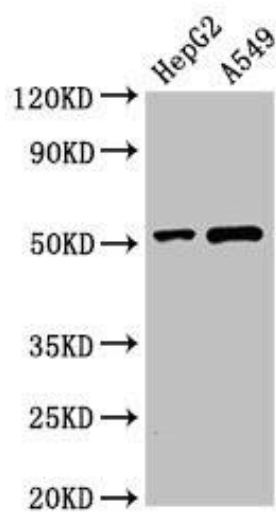
Recombinant Human Pancreatic lipase-related protein 2 protein (305-460AA).

**Storage:**

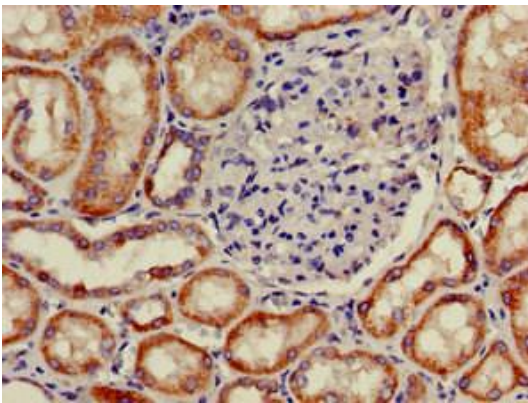
Preservative: 0.03% Proclin 300. Constituents: 50% Glycerol, 0.01M PBS, pH 7.4

## Product Images

---



Western Blot. Positive WB detected in: HepG2 whole cell lysate, A549 whole cell lysate. All lanes: PNLIPRP2 antibody at 3 $\mu$ g/ml. Secondary. Goat polyclonal to rabbit IgG at 1/50000 dilution. Predicted band size: 52 kDa. Observed band size: 52 kDa.



Immunohistochemistry of paraffin-embedded human kidney tissue using PACO51822 at dilution of 1:100.