

# OTX1 Antibody



PACO51774

---

## Product Information

**Size:**

50ug

**Reactivity:**

Human

**Source:**

Rabbit

**Isotype:**

IgG

**Applications:**

ELISA, IHC, IF

**Recommended dilutions:**

ELISA:1:2000-1:10000, IHC:1:20-1:200,  
IF:1:50-1:200

**Protein Background:**

Probably plays a role in the development of the brain and the sense organs. Can bind to the BCD target sequence (BTS): 5'-TCTAATCCC-3'.

**Gene ID:**

OTX1

**Uniprot**

P32242

**Synonyms:**

Homeobox protein OTX1 (Orthodenticle homolog 1), OTX1

**Immunogen:**

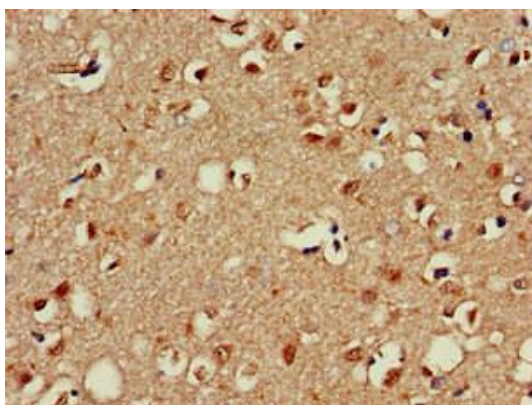
Recombinant Human Homeobox protein OTX1 protein (29-244AA).

**Storage:**

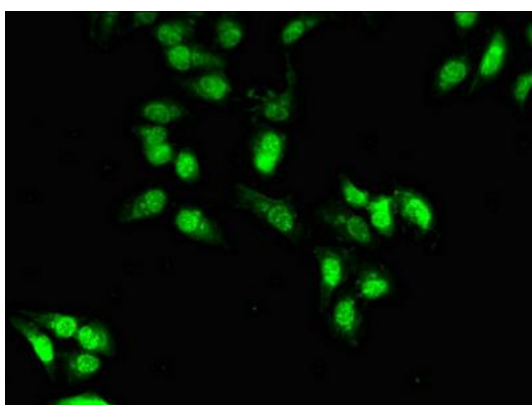
Preservative: 0.03% Proclin 300. Constituents: 50% Glycerol, 0.01M PBS, pH 7.4

## Product Images

---



Immunohistochemistry of paraffin-embedded human brain tissue using PACO51774 at dilution of 1:100.



Immunofluorescent analysis of HeLa cells using PACO51774 at dilution of 1:100 and Alexa Fluor 488-conjugated AffiniPure Goat Anti-Rabbit IgG(H+L).