

## Product Information

**Size:**

50ug

**Reactivity:**

Human

**Source:**

Rabbit

**Isotype:**

IgG

**Applications:**

ELISA, IF

**Recommended dilutions:**

ELISA:1:2000-1:10000, IF:1:50-1:200

**Protein Background:**

Involved in the nuclear export of mRNA species bearing retroviral constitutive transport elements (CTE) and in the export of mRNA from the nucleus to the cytoplasm (TAP/NFX1 pathway). The NXF1-NXT1 heterodimer is involved in the export of HSP70 mRNA in conjunction with ALYREF/THOC4 and THOC5 components of the TREX complex. ALYREF/THOC4-bound mRNA is thought to be transferred to the NXF1-NXT1 heterodimer for export.

**Gene ID:**

NXF1

**Uniprot**

Q9UBU9

**Synonyms:**

Nuclear RNA export factor 1 (Tip-associated protein) (Tip-associating protein) (mRNA export factor TAP), NXF1, TAP

**Immunogen:**

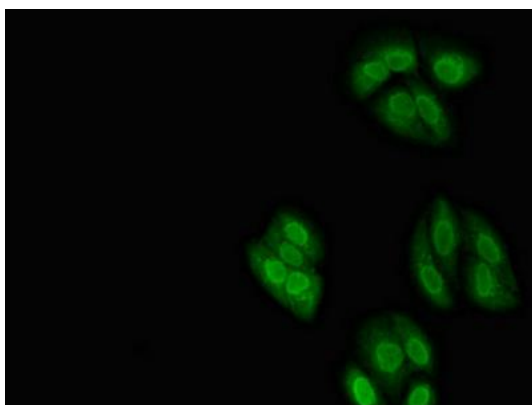
Recombinant Human Nuclear RNA export factor 1 protein (1-130AA).

**Storage:**

Preservative: 0.03% Proclin 300. Constituents: 50% Glycerol, 0.01M PBS, pH 7.4

## Product Images

---



Immunofluorescent analysis of HepG2 cells using PACO51762 at dilution of 1:100 and Alexa Fluor 488-conjugated AffiniPure Goat Anti-Rabbit IgG(H+L).