

KIR3DL1 Antibody



PACO51678

Product Information

Size:

50ug

Reactivity:

Human

Source:

Rabbit

Isotype:

IgG

Applications:

ELISA, WB, IHC, IF

Recommended dilutions:

ELISA:1:2000-1:10000, WB:1:500-1:5000,
IHC:1:20-1:200, IF:1:50-1:200

Protein Background:

Receptor on natural killer (NK) cells for HLA Bw4 allele. Inhibits the activity of NK cells thus preventing cell lysis.

Gene ID:

KIR3DL1

Uniprot

P43629

Synonyms:

Killer cell immunoglobulin-like receptor 3DL1 (CD158 antigen-like family member E) (HLA-BW4-specific inhibitory NK cell receptor) (MHC class I NK cell receptor) (Natural killer-associated transcript 3) (NKAT-3) (p70 natural killer cell receptor clones CL-2/CL-11) (p70 NK receptor CL-2/CL-11) (CD antigen CD158e), KIR3DL1, CD158E NKAT3 NKB1

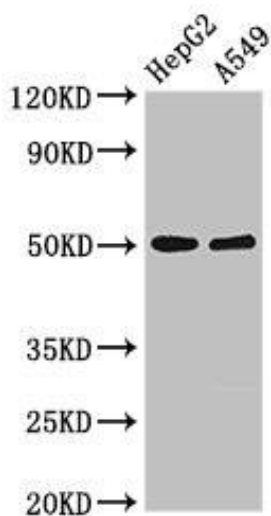
Immunogen:

Recombinant Human Killer cell immunoglobulin-like receptor 3DL1 protein (81-336AA).

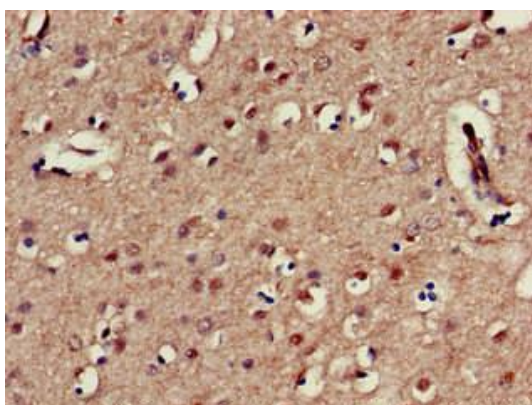
Storage:

Preservative: 0.03% Proclin 300. Constituents: 50% Glycerol, 0.01M PBS, pH 7.4

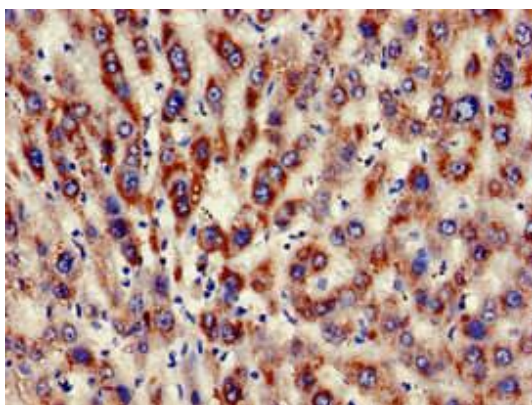
Product Images



Western Blot. Positive WB detected in: HepG2 whole cell lysate, A549 whole cell lysate. All lanes: KIR3DL1 antibody at 2.5 μ g/ml. Secondary. Goat polyclonal to rabbit IgG at 1/50000 dilution. Predicted band size: 50, 39 kDa. Observed band size: 50 kDa.



Immunohistochemistry of paraffin-embedded human brain tissue using PACO51678 at dilution of 1:100.



Immunohistochemistry of paraffin-embedded human liver tissue using PACO51678 at dilution of 1:100.