

PACO51654

Product Information

Size:

50ug

Reactivity:

Human

Source:

Rabbit

Isotype:

IgG

Applications:

ELISA, WB

Recommended dilutions:

ELISA:1:2000-1:10000, WB:1:500-1:5000

Protein Background:

Converts inositol hexakisphosphate (InsP6) to diphosphoinositol pentakisphosphate (InsP7/PP-InsP5). Converts 1,3,4,5,6-pentakisphosphate (InsP5) to PP-InsP4.

Gene ID:

IP6K1

Uniprot

Q92551

Synonyms:

Inositol hexakisphosphate kinase 1 (InsP6 kinase 1) (EC 2.7.4.21) (Inositol hexaphosphate kinase 1), IP6K1, IHPK1 KIAA0263

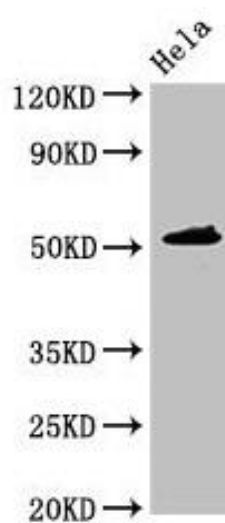
Immunogen:

Recombinant Human Inositol hexakisphosphate kinase 1 protein (1-441AA).

Storage:

Preservative: 0.03% Proclin 300. Constituents: 50% Glycerol, 0.01M PBS, pH 7.4

Product Images



Western Blot. Positive WB detected in: HeLa whole cell lysate. All lanes: IP6K1 antibody at 3.5 μ g/ml. Secondary. Goat polyclonal to rabbit IgG at 1/50000 dilution. Predicted band size: 51, 32 kDa. Observed band size: 51 kDa.