

# GRAP2 Antibody



PACO51590

---

## Product Information

**Size:**

50ug

**Reactivity:**

Human, Rat

**Source:**

Rabbit

**Isotype:**

IgG

**Applications:**

ELISA, WB, IHC, IF

**Recommended dilutions:**

ELISA:1:2000-1:10000, WB:1:500-1:5000,  
IHC:1:20-1:200, IF:1:50-1:200

**Protein Background:**

Interacts with SLP-76 to regulate NF-AT activation. Binds to tyrosine-phosphorylated shc.

**Gene ID:**

GRAP2

**Uniprot**

O75791

**Synonyms:**

GRB2-related adapter protein 2 (Adapter protein GRID) (GRB-2-like protein) (GRB2L) (GRBLG) (GRBX) (Grf40 adapter protein) (Grf-40) (Growth factor receptor-binding protein) (Hematopoietic cell-associated adapter protein GrpL) (P38) (Protein GADS) (SH3-SH2-SH3 adapter Mona), GRAP2, GADS GRB2L GRID

**Immunogen:**

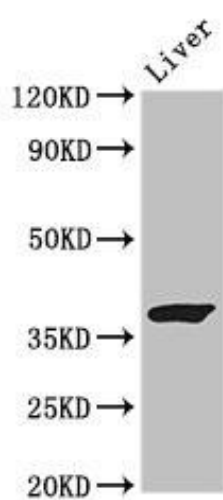
Recombinant Human GRB2-related adapter protein 2 protein (149-251AA).

**Storage:**

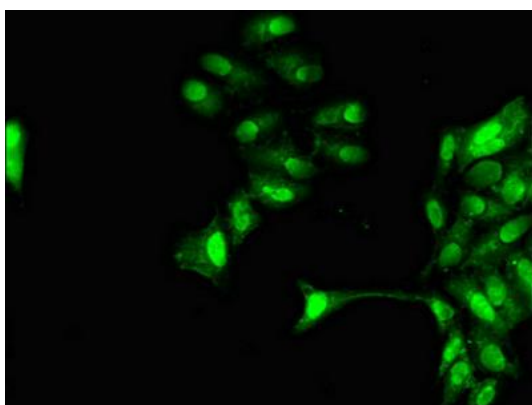
Preservative: 0.03% Proclin 300. Constituents: 50% Glycerol, 0.01M PBS, pH 7.4

## Product Images

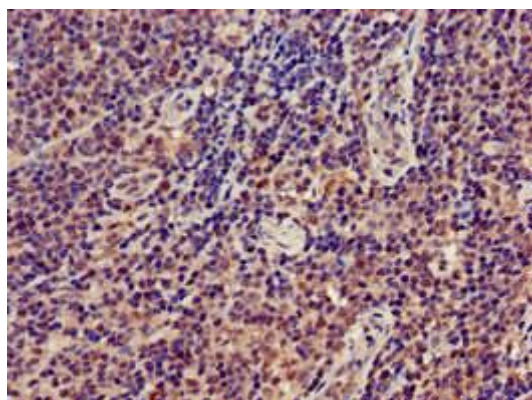
---



Western Blot. Positive WB detected in: Rat liver tissue. All lanes: GRAP2 antibody at 3 $\mu$ g/ml. Secondary. Goat polyclonal to rabbit IgG at 1/50000 dilution. Predicted band size: 38, 25 kDa. Observed band size: 38 kDa.



Immunofluorescent analysis of HeLa cells using PACO51590 at dilution of 1:100 and Alexa Fluor 488-conjugated AffiniPure Goat Anti-Rabbit IgG(H+L).



Immunohistochemistry of paraffin-embedded human lymph node tissue using PACO51590 at dilution of 1:100.